

The logo for Magneti Marelli, featuring the brand name in a bold, blue, sans-serif font with a slight shadow effect, set against a yellow background.

**MAGNETI
MARELLI**

PARTS & SERVICES

STANDARD

TOUCH FLAT

TWIN FLAT

REAR FLAT

REAR PLASTIC

A photograph taken from the driver's perspective inside a car. The windshield is covered in raindrops, and a single wiper blade is visible on the left side. The view through the windshield shows a wet, paved road stretching into the distance, flanked by grassy fields and mountains under a dramatic, cloudy sky with sunlight breaking through. The steering wheel and dashboard are partially visible in the foreground.

WIPER BLADES

THE RANGE

A full range of single wiper blades and kits, with traditional and flat technology as well as plastic models, aimed at achieving a design similar to OE.

1 STANDARD



16 models

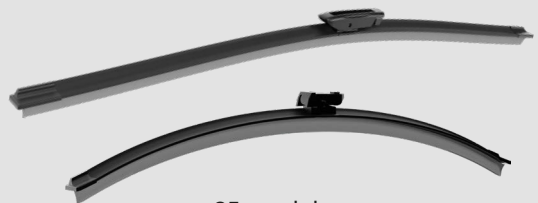
Single blades

Traditional technology
with pre-assembled connector and frame

Sizes 28 - 71 cm

Identified by the code "SW"

3 TWIN FLAT



85 models

Blades in kit form

Flat technology and pre-assembled
connectors

Sizes 30 - 80 cm

Identified by the code "TW"

2 TOUCH FLAT



15 models

Single blades

Flat technology
with multi-clip connector system

Each pack contains 8 connectors
for full and constantly up-to-date coverage
of vehicles currently in circulation

Sizes 35 - 80 cm

Identified by the code "MF"

4 REAR



10 single blade models

5 flat-technology models and 5 models in plastic
for a design that is always similar to the OE

Multi-clip connector system

Sizes 25 - 40 cm

Identifiable by the code "FR" (Flat model)
and "PR" (Plastic model)

THE RANGE

Magneti Marelli Parts & Services blades are designed to ensure high performance and durability. They have a compact and aerodynamic design, for perfect all-weather wiping; fitting systems are intuitive and versatile, ensuring ease of installation, backed up by clear fitting instructions.

NEW

Find the right blade for your car:
for the **TOUCH FLAT**, **TWIN FLAT**
and **REAR** product groups, scanning
the QR Code allows rapid identification
of the right blade to fit via the relative
vehicle make and model.



THE CODE IS DESCRIPTIVE

Spare parts are immediately recognisable thanks to the easy-to-read code on the pack.

MEASURE YOUR BLADE

A ruler on the packaging helps in checking the size of the blade to be replaced, making it easier to identify the right spare part for the specific application.



TRADITIONAL TECHNOLOGY

STANDARD

A compact range of just 16 items that offers full coverage of vehicles currently in circulation.

Blades with frame and pre-assembled connector to ensure rapid fitting.

Easy to fit, sturdy and durable.

Excellent value for money.



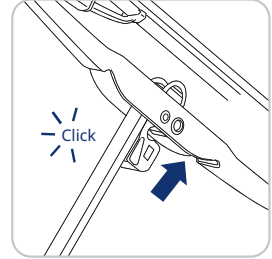
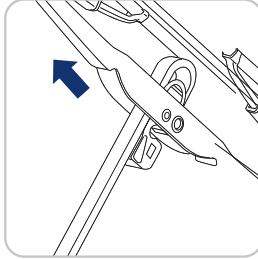
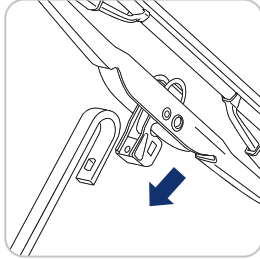
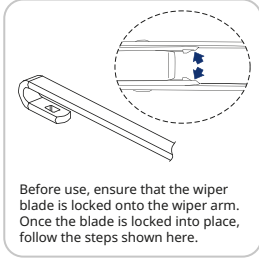
STANDARD – Fitting Instructions



Blades with connector
pre-assembled to simplify
replacement:

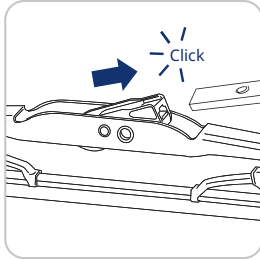
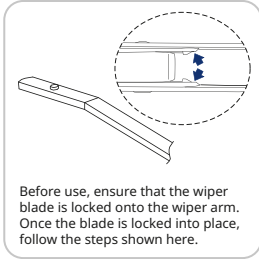
HOOK

9×3 mm / 9×4 mm



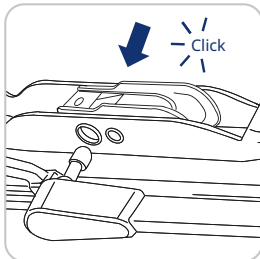
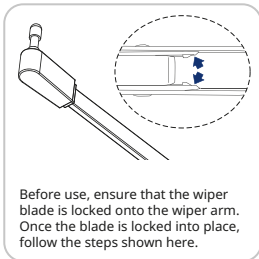
BAYONET

7×2.6 mm



PIN

6.3 mm (1/4")



STANDARD – Main blade applications



SW1280

NISSAN

TERRANO II (R20) 2.4 4WD
 TERRANO II (R20) 2.7 TD 4WD
 TERRANO II (R20) 2.7 TDi 4WD
 TERRANO II (R20) 3.0 Di 4WD

SEAT

ALTEA XL (5P5, 5P8) 1.2 TSI
 ALTEA XL (5P5, 5P8) 1.4 TSI
 ALTEA XL (5P5, 5P8) 1.4 16V
 ALTEA XL (5P5, 5P8) 1.6
 ALTEA XL (5P5, 5P8) 1.6 Multifuel
 ALTEA XL (5P5, 5P8) 1.6 TDI

SW1300

FIAT

CINQUECENTO (170_) 0.9 i.e. S (170AF, 170CF)

FORD

ECOSPORT 1.0 EcoBoost
 FIESTA V (JH_, JD_) 1.25 16V
 FIESTA V (JH_, JD_) 1.3
 FIESTA V (JH_, JD_) 1.4 16V
 FIESTA V (JH_, JD_) 1.4 TDCi
 FUSION (JU_) 1.4
 FUSION (JU_) 1.4 TDCi
 FUSION (JU_) 1.6

MITSUBISHI

COLT VI (Z3_A, Z2_A) 1.3 (Z21A)

SW1330

AUDI

A3 (8P1) 1.9 TDI
 A3 (8P1) 2.0 TDI 16V

FIAT

126 (126_) 650
 PANDA (141_) 650
 UNO (146_, 158_) 70 S 1.4
 UNO (146_, 158_) 1.1

FORD

TRANSIT CONNECT (P65_, P70_, P80_) 1.8 TDCi

SEAT

IBIZA III (6L1) 1.9 TDI → 01/06
 IBIZA III (6L1) 1.4 16V → 01/06



SW1350

DAEWOO

MATIZ (M100, M150) 0.8

FORD

FOCUS II (DA_, HCP, DP) 1.6
 KA (RU8) 1.2

NISSAN

MICRA IV (K13K, K13KK) 1.2
 JUKE (F15) 1.5 dCi
 JUKE (F15) 1.6

TOYOTA

YARIS (_P1_) 1.0 (SCP10_, SCP10R)
 YARIS (_P9_) 1.0 VWT-i (KSP90_, KSP90R)
 YARIS (_P9_) 1.3 VWT-i (SCP90_, SCP90R)

VOLKSWAGEN

GOLF IV (1J1) 1.4 16V

SW1380

FORD

FOCUS I (DAW, DBW) 1.6 16V
 TRANSIT CONNECT (P65_, P70_, P80_) 1.8 Di
 TRANSIT CONNECT (P65_, P70_, P80_) 1.8 TDCi

HONDA

JAZZ II (GD_, GE3, GE2) 1.2 i-DSi (GD5, GE2)
 JAZZ II (GD_, GE3, GE2) 1.3 iDSi (GD1)
 JAZZ II (GD_, GE3, GE2) 1.3 iDSi (GD1)

RENAULT

KANGOO Express (FC0/1_) 1.5 dCi (FC1E)
 KANGOO Express (FC0/1_) D 65 1.9
 (FC0E, FC02, FC0J, FC0N)

VOLKSWAGEN

FOX Hatchback (5Z1, 5Z3, 5Z4, 5Z5) 1.2
 PASSAT B5.5 Variant (3B6) 1.9 TDI

SW1400

FIAT

PANDA / PANDA CLASSIC (169_) 1.1 (169.AXA1A)
 PANDA / PANDA CLASSIC (169_) 1.2
 (169.AXB11, 169.AXB1A)

FORD

ECOSPORT 1.0 EcoBoost
 FIESTA V (JH_, JD_) 1.4 16V
 FIESTA V (JH_, JD_) 1.4 TDCi

HYUNDAI

ACCENT IV Tre volumi (RB) 1.6
 i10 II (BA, IA) 1.0

LADA

GRANTA (2190_) 1.6 (21901)

PEUGEOT

206 Hatchback (2A/C) 1.4 i

VOLKSWAGEN

POLO V Tre volumi (602, 604, 612, 614) 1.6

TRADITIONAL TECHNOLOGY



SW1430

FORD

KA (RB_) 1.3 i
KA (RB_) 1.3 i ROCAM

HONDA

CR-V III (RE_) 2.0 i-VTEC 4WD (RE5, RE2)
CR-V III (RE_) 2.2 i-CTDi 4WD (RE6)
CR-V III (RE_) 2.2 i-DTEC 4WD (RE6)

SUZUKI

SWIFT IV (FZ, NZ) 1.2 (AZG412, ZC72S)
SWIFT IV (FZ, NZ) 1.2 (AZH412, ZC72S)

TOYOTA

STARLET (_P9_) 1.3 (EP91_, EP91R)
RAV 4 III (_A3_) 2.0 4WD (ACA30_, ACA30R)
RAV 4 III (_A3_) 2.2 D 4WD (ALA30_, ALA30R)

SW1450

CITROËN

C3 I (FC_, FN_) 1.1 i
C3 I (FC_, FN_) 1.4 HDi
C3 I (FC_, FN_) 1.4 i

DAEWOO

NEXIA Tre volumi 1.5 (19)

FIAT

PUNTO (188_) 1.2 60 (188.030, .050, .130, .150, .230, .250)

LADA

VESTA (GFL_) 1.6 (GFL11)

NISSAN

MICRA III (K12) 1.2 16V

OPEL

CORSA C (X01) 1.2 (F08, F68)

RENAULT

CLIO II (BB_, CB_) 1.2 (BB0A, BB0F, BB10, BB1K, BB28, BB2D, BB2H, CB0A,...)
CLIO II (BB_, CB_) 1.2 16V (BB05, BB0W, BB11, BB27, BB2T, BB2U, BB2V, CB05,...)

SW1480

FIAT

SEICENTO / 600 (187_) 0.9 (187AXA, 187AXA1A)
SEICENTO / 600 (187_) 1.1 (187AXB, 187AXB1A, 187AXC1A02)

FORD

FOCUS I (DAW, DBW) 1.6 16V

MINI

MINI (F55) Cooper
MINI (F56) Cooper
MINI (R50, R53) Cooper

SEAT

IBIZA III (6L1) 1.4 16V → 01/06
IBIZA III (6L1) 1.9 TDI → 01/06

TOYOTA

RAV 4 II (_A2_) 2.0 4WD (ACA21, ACA20)

VOLKSWAGEN

GOLF IV (1J1) 1.4 16V



SW1500

LADA

110 (2110) 1.5
112 (2112) 1.5 16V
PRIORA Tre volumi (2170_) 1.6
PRIORA Hatchback (2172) 1.6

OPEL

CORSA C (X01) 1.2 (F08, F68)
CORSA C (X01) 1.2 Twinport (F08, F68)

RENAULT

LOGAN I (LS_) 1.4
LOGAN I (LS_) 1.6

SW1530

DAEWOO

MATIZ (M100, M150) 0.8

LADA

OKA (1111_) 0.8

NISSAN

MICRA IV (K13K, K13KK) 1.2
MICRA III (K12) 1.2 16V

SEAT

IBIZA III (6L1) 1.9 TDI → 01/06

SUZUKI

SWIFT III (MZ, EZ) 1.3 (RS413, ZC11S)

TOYOTA

YARIS (_P1_) 1.0 (SCP10_, SCP10R)
YARIS (_P1_) 1.3 (NCP10, SCP12_)

VOLKSWAGEN

GOLF IV (1J1) 1.4 16V
FOX Hatchback (5Z1, 5Z3, 5Z4, 5Z5) 1.2

SW1550

DACIA

SANDERO II (B8_) TCe 90 (B8M1, B8MA, B8AC)

FIAT

PANDA / PANDA CLASSIC (169_) 1.1 (169.AXA1A)
PANDA / PANDA CLASSIC (169_) 1.2 (169.AXB11, 169.AXB1A)
PUNTO (188_) 1.2 60 (188.030, .050, .130, .150, .230, .250)

FORD

FIESTA V (JH_, JD_) 1.4 16V
FIESTA V (JH_, JD_) 1.4 TDCi

NISSAN

JUKE (F15) 1.5 dCi
JUKE (F15) 1.6

RENAULT

CLIO II (BB_, CB_) 1.2 (BB0A, BB0F, BB10, BB1K, BB28, BB2D, BB2H, CB0A,...)
CLIO II (BB_, CB_) 1.2 16V (BB05, BB0W, BB11, BB27, BB2T, BB2U, BB2V, CB05,...)

STANDARD – Main blade applications



SW1580

FIAT

PUNTO (176_) 55 1.1
 PUNTO (176_) 60 1.2
 PUNTO (176_) 60 1.2 (176AP, 176AR, 176AQ, 176BB)
 PUNTO (176_) 75 1.2
 PUNTO Cabriolet (176_) 60 1.2
 PUNTO Cabriolet (176_) 60 1.2 (176AR_, 176BR_)

PUNTO Cabriolet (176_) 85 16V 1.2

SIENA (178_, 172_, 372_) 1.3 JTD

SIENA (178_, 172_, 372_) 1.4

LANCIA

Y (840_) 1.2 (840AA, 840AF1A)

SW1600

CITROËN

C3 I (FC_, FN_) 1.4 HDi

C3 I (FC_, FN_) 1.4 i

FORD

KA (RU8) 1.2

KIA

PICANTO III (JA) 1.0

LADA

GRANTA (2190_) 1.6 (21901)

VESTA (GFL_) 1.6 (GFL11)

TOYOTA

YARIS (_P9_) 1.0 VVT-i (KSP90_, KSP90R)

YARIS (_P9_) 1.3 VVT-i (SCP90_, SCP90R)

VOLKSWAGEN

POLO V Tre volumi (602, 604, 612, 614) 1.6

SW1660

CITROËN

C1 (PM_, PN_) 1.0

XSARA PICASSO (N68) 2.0 HDi

HYUNDAI

ACCENT IV Tre volumi (RB) 1.6

PEUGEOT

107 (PM_, PN_) 1.0

206 Hatchback (2A/C) 1.1 i

206 Hatchback (2A/C) 1.4 i

206 Hatchback (2A/C) 1.4 HDi eco 70

RENAULT

TWINGO I (C06_) 1.2 (C066, C068)

TOYOTA

AYGO (_B1_) 1.0 (KGB10_, KGB10R)

COROLLA Tre volumi (_E15_) 1.6 Dual VVTi (ZRE141, ZRE151)



SW1710

FORD

TRANSIT Furgone (FA_) 2.2 TDCi

TRANSIT Pianale piatto/Telaio (FM_, FN_, FF_) 2.4 TDCi 4x4

PEUGEOT

307 (3A/C) 1.6 16V

307 (3A/C) 2.0 HDi 90

TOYOTA

YARIS (_P13_) 1.0 (KSP130_, KSP130)

YARIS (_P13_) 1.3 (NSP130_, NSP130)

YARIS (_P13_) 1.4 D (NLP130_, NLP130)

YARIS (_P13_) 1.5 Hybrid (NHP130_)

YARIS (_P13_) 1.5 Hybrid (NHP130_, NHP130)

YARIS (_P13_) 1.5 (NSP131_)



Access the full list
 of applications
 for the fitting of
STANDARD blades.

FLAT TECHNOLOGY

TOUCH FLAT



A new range of 15 models of high-quality blades, designed to guarantee high performance and full coverage of vehicles currently in circulation in Europe.

Flat technology and graphite-coated rubber to reduce friction and noise during use.

The aerodynamic flat-blade design provides **uniform pressure on the windscreen**, ensuring efficient cleaning and optimal visibility.

Multi-clip adaptor system, suitable for all types of arms, both for cars with flat technology and cars with traditional technology and a hook arm.

8 connectors included with each blade to guarantee full and constantly up-to-date coverage of vehicles currently in circulation in Europe.

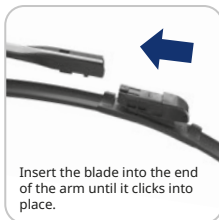
Fitting instructions included to guarantee easier installation.

Environmentally friendly and recyclable cardboard packaging.

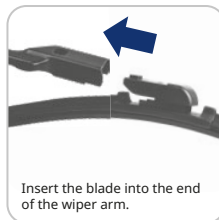


TOUCH FLAT – Fitting Instructions

PUSH BUTTON (19 mm)



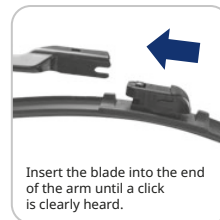
PUSH BUTTON (22 mm)



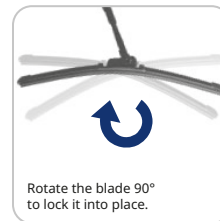
EURO BAYONET



NOTCHED PUSH BUTTON



SIDE PIN (17 mm)



The wiper blade is now secured in place.

Each package contains practical QR codes to access videos with fitting instructions.

SIDE PIN
(22 mm)

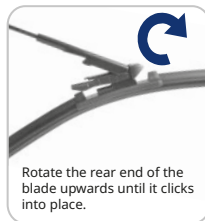
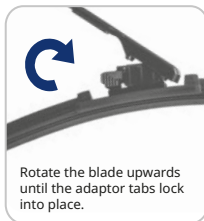
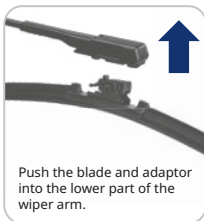
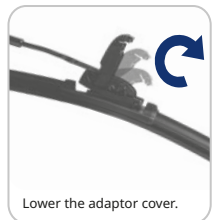
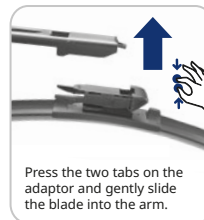
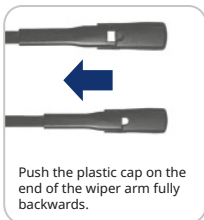
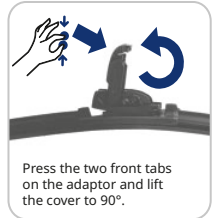
**SLIDE
BUTTON**

TTL


PINCH TAB

**PINCH TAB
with button**

**STANDARD
HOOK**



TOUCH FLAT – Blade-arm-connector compatibility

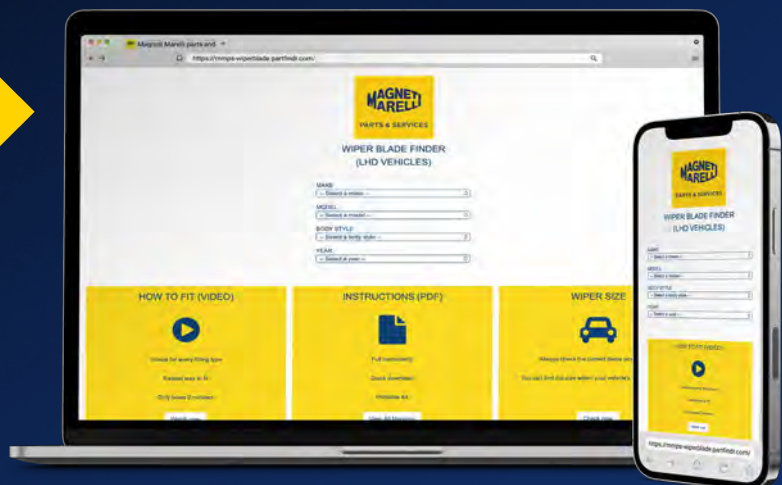
ARM TYPE												
	PUSH BUTTON (19 mm)	PUSH BUTTON (22 mm)	EURO BAYONET	NOTCHED PUSH BUTTON	SIDE PIN (17 mm)	SIDE PIN (22 mm)	SLIDE BUTTON	TTL	PINCH TAB	PINCH TAB with button	STANDARD HOOK	STANDARD HOOK (Hybrid)
MF35B	—	MA7	MA2	—	—	—	—	MA12	MA11	—	pre-assembled	
MF38B	—	MA7	—	—	—	—	—	—	M11	—	pre-assembled	
MF40B	MA5	MA7	MA2	MA9	—	MA6	—	MA12	M11	—	pre-assembled	
MF43B	MA5	MA7	—	—	MA6	MA6	—	—	—	—	pre-assembled	
MF45B	MA5	MA7	MA2	MA9	MA6	MA6	MA11	—	M11	—	pre-assembled	
MF48B	MA5	MA7	MA2	—	—	MA6	MA11	—	M11	—	pre-assembled	
MF50B	MA5	MA7	MA2	MA9	—	MA6	—	MA12	M11	—	pre-assembled	
MF53B	MA5	MA7	MA2	—	—	MA6	—	MA12	M11	—	pre-assembled	
MF55B	MA5	MA7	MA2	—	—	MA6	MA11	—	M11	—	pre-assembled	
MF58B	MA5	MA7	MA2	—	—	MA6	—	MA12	M11	M11	pre-assembled	
MF60B	MA5	MA7	MA2	MA9	—	MA6	MA11	MA12	M11	M11	pre-assembled	
MF65B	MA5	MA7	MA2	MA9	MA6	MA6	MA11	MA12	M11	—	pre-assembled	
MF70B	MA5	MA7	—	MA9	—	MA6	MA11	MA12	M11	—	pre-assembled	
MF75B	MA5	MA7	MA2	—	—	MA6	—	—	M11	—	—	
MF80B	—	MA7	MA2	—	—	MA6	—	—	—	—	—	

NEW

WiperFinder

Use the WiperFinder search engine to find the **Touch Flat** blade best suited to your customer's vehicle.

Available via the following address:
<https://mmps-wiperblade.partfindr.com/>



TOUCH FLAT – Main blade applications

* PRE-ASSEMBLED CONNECTOR



MF35B			
FIAT			
500 (312_) 1.2 (312AXA1A)	07/07 →		MA7
FORD			
KA (RU8) 1.2	10/08 → 10/10	*	
	11/10 → 05/16		MA7
NISSAN			
JUKE (F15) 1.6	06/10 → 05/17	*	
RENAULT			
CLIO IV (BH_) 0.9 TCe 90 (BHNF, BHMA, BHMH, BHJK, BHJR)	11/12 → 08/21		MA2
CLIO IV (BH_) 1.5 dCi 90	11/12 → 08/21		MA2
CAPTUR I (J5_, H5_) 0.9 TCe 90	06/13 → 02/16		MA2
	03/16 → 12/19		MA12
CAPTUR I (J5_, H5_) 1.5 dCi 90 (J5N4, J5M5, J5MW, J5M6, J5AL, J5AJ)	06/13 → 02/16		MA2
	03/16 → 12/19		MA12

MF38B			
FIAT			
GRANDE PUNTO (199_) 1.2	10/05 →		M11
GRANDE PUNTO (199_) 1.3 D Multijet	10/05 → 06/13		M11
GRANDE PUNTO (199_) 1.4 (199AXB11, 199AXB1A, 199BXB1A, 199AXL1A)	06/05 → 12/15		M11
PANDA (312_, 319_) 1.2 (312PXA1A)	02/12 →		MA7
FORD			
FIESTA VI (CB1, CCN) 1.0 EcoBoost	01/13 → 04/17		MA7
FIESTA VI (CB1, CCN) 1.25	06/08 → 04/17		MA7
FIESTA VI (CB1, CCN) 1.4	10/08 → 04/17		MA7
FIESTA VI (CB1, CCN) 1.4 TDCi	08/08 → 09/12		MA7
NISSAN			
QASHQAI I (J10, NJ10) 1.5 dCi	11/06 → 11/13		M11

MF40B			
CITROËN			
C3 III (SX) 1.2 VTI 82	07/16 →		MA7
FIAT			
PANDA (169_) 1.2 (169.AXB11, 169.AXB1A)	09/03 →	*	
NISSAN			
QASHQAI II (J11, J11_) 1.2 DIG-T	11/13 → 12/20	*	
QASHQAI II (J11, J11_) 1.5 dCi	11/13 → 12/20	*	
OPEL			
CORSA E (X15) 1.4 (08, 68)	09/14 →		M11
PEUGEOT			
206 Hatchback (2A/C) 1.4 i	09/98 → 12/12	*	
208 I (CA_, CC_) 1.2 VTI 82	03/12 → 12/19		MA7



MF40B			
TOYOTA			
C-HR (X1_) 1.8 Hybrid (ZYX10_, ZYX11_, ZYX10R, ZYX11R)	10/16 →		MA9
YARIS (P21_, PA1_, PH1_) 1.5 Hybrid (MXP10, MXP11)	02/20 →		*
VOLKSWAGEN			
UP! (121, 122, BL1, BL2, BL3, 123) 1.0	08/11 → 08/20		MA5

MF43B			
CITROËN			
BERLINGO Box Body/MPV (K9) 1.5 BlueHDi 100	06/18 →		MA7
FORD			
FOCUS II (DA_, HCP, DP) 1.6	07/04 → 09/12		MA6
FOCUS II (DA_, HCP, DP) 1.6 TDCi	07/04 → 09/12		MA6
PEUGEOT			
207 (WA_, WC_) 1.4	04/06 → 10/13		MA6
207 (WA_, WC_) 1.4 HDi	02/06 → 12/15		MA6
207 (WA_, WC_) 1.6 HDi	02/06 → 10/13		MA6
3008 II SUV (MC_, MR_, MJ_, M4_) 1.2 THP/ PureTech 130 (MRHNSM, MRHNSU, MRHNSJ, MRHNYW, ...)	05/16 →		MA5
3008 II SUV (MC_, MR_, MJ_, M4_) 1.5 BlueHDi 130	02/18 →		MA5
RENAULT			
KADJAR (HA_, HL_) 1.5 dCi 110 (HLA3)	06/15 → 12/17	*	
SUZUKI			
SWIFT IV (FZ, NZ) 1.2 (AZH412, ZC72S)	10/10 → 12/16	*	

MF45B			
CITROËN			
C3 I (FC_, FN_) 1.4 i	02/02 → 11/10	*	
C3 I (FC_, FN_) 1.4 HDi	02/02 → 12/09	*	
FIAT			
PUNTO (188_) 1.2 60 (188.030, .050, .130, .150, .230, .250)	09/99 → 12/10	*	
NISSAN			
MICRA III (K12) 1.2 16V	01/03 → 06/10	*	
OPEL			
CORSA C (X01) 1.2 (F08, F68)	09/00 → 12/09	*	
RENAULT			
CLIO II (BB_, CB_) 1.2 (BB0A, BB0F, BB10, BB1K, BB28, BB2D, BB2H, CB0A, ...)	09/98 → 02/10	*	
VOLKSWAGEN			
GOLF IV (1J1) 1.4 16V	06/02 → 05/04		MA6
PASSAT B8 Variant (3G5, CB5) 2.0 TDI	11/14 → 12/23		MA5
POLO IV (9N_, 9A_) 1.2 12V	10/01 → 05/05		MA6
POLO IV (9N_, 9A_) 1.4 16V	10/01 → 05/05		MA6

TOUCH FLAT – Main blade applications

* PRE-ASSEMBLED CONNECTOR



MF48B			
AUDI			
A3 (8P1) 2.0 TDI 16V	01/05 → 08/12	M11	
FIAT			
FIORINO Box Body/MPV (225_) 1.3 D Multijet (225BXD1A, 225BXB1A, 225BXB11)	11/07 →	MA2	
MERCEDES-BENZ			
A-CLASS (W176) A 180 CDI / d (176.012)	06/12 → 06/15	M11	
VOLKSWAGEN			
GOLF IV (1J1) 1.4 16V	10/97 → 05/02	*	
GOLF V (1K1) 1.9 TDI	10/03 → 10/05	MA6	
	11/05 → 11/08	MA7	
GOLF VI (5K1) 1.6 TDI	02/09 → 11/12	MA7	
	07/15 → 05/18	MA11	
POLO IV (9N_, 9A_) 1.2 12V	06/05 → 07/07	MA7	
POLO IV (9N_, 9A_) 1.4 16V	06/05 → 05/08	MA7	

MF50B			
AUDI			
A4 B8 Avant (8K5) 2.0 TDI	04/08 → 12/15	MA5	
DACIA			
DUSTER (HS_) 1.5 dCi 4x4 (HSMC, HSMC)	10/10 → 10/14	*	
SANDERO II 1.5 dCi	10/12 → 02/15	*	
FORD			
FOCUS IV (HN) 1.0 EcoBoost	01/18 →	MA7	
TRANSIT CONNECT (P65_, P70_, P80_) 1.8 TDCi	06/02 → 12/13	*	
JEEP			
RENEGADE SUV (BU, B1, BV) 1.6 CRD	07/14 →	MA7	
OPEL			
CORSA C (X01) 1.2 (F08, F68)	09/00 → 12/09	*	
CORSA C (X01) 1.2 Twinport (F08, F68)	07/04 → 12/09	*	
RENAULT			
TWINGO III (BCM_, BCA_) 1.0 SCe 70	09/14 →	MA2	

MF53B			
DAEWOO			
MATIZ (M100, M150) 0.8	09/98 →	*	
NISSAN			
MICRA IV (K13K, K13KK) 1.2	05/10 → 09/15	*	
RENAULT			
KANGOO Express (FW0/1_) 1.5 dCi 75 (FW07, FW10, FW04)	09/10 →	MA2	
KANGOO Express (FW0/1_) 1.5 dCi 90 (FW0G, FW05, FW08, FW11)	06/09 →	MA2	
SMART			
FORTWO Coupe (451) 1.0 (451.331, 451.380)	01/07 → 12/14	M11	



MF53B			
TOYOTA			
YARIS (P1_) 1.0 (SCP10_, SCP10R)	04/99 → 09/05	*	
YARIS (P1_) 1.3 (NCP10, SCP12_)	08/99 → 11/05	*	
VOLKSWAGEN			
POLO IV (9N_, 9A_) 1.4 16V	10/01 → 05/05	MA6	
	06/05 → 05/08	MA7	

MF55B			
FIAT			
DUCATO Van (250_) 130 Multijet 2,3 D	08/06 →	MA7	
FORD			
FUSION (JU_) 1.4	08/02 → 12/12	*	
JEEP			
RENEGADE SUV (BU, B1, BV) 1.6 CRD	07/14 →	MA7	
KIA			
PICANTO I (SA) 1.1	04/04 → 04/11	*	
PEUGEOT			
206 Hatchback (2A/C) 1.1 i	09/98 → 02/07	*	
206 Hatchback (2A/C) 1.4 HDi eco 70	09/01 → 04/09	*	
SUZUKI			
SWIFT IV (FZ, NZ) 1.2 (AZH412, ZC725)	10/10 → 12/16	*	
ALTO VII (GF, HA25_, HA35_) 1.0 (AMF310, GFC31S)	01/09 →	*	

MF58B			
FIAT			
PANDA (169_) 1.1 (169.AXA1A)	09/03 →	*	
PANDA (169_) 1.2 (169.AXB11, 169.AXB1A)	09/03 →	*	
PANDA (169_) 1.2 Natural Power (169.AXB1A)	01/07 → 12/11	*	
MERCEDES-BENZ			
A-CLASS (W169) A 150 (169.031, 169.331)	09/04 → 06/12	M11	
A-CLASS (W169) A 180 CDI (169.007, 169.307)	09/04 → 06/12	M11	
RENAULT			
KANGOO Express (FW0/1_) 1.5 dCi 75 (FW07, FW10, FW04)	09/10 →	MA2	
KANGOO Express (FW0/1_) 1.5 dCi 90 (FW0G, FW05, FW08, FW11)	06/09 →	MA2	
SMART			
FORTWO Coupe (451) 1.0 (451.331, 451.380)	01/07 → 12/14	M11	

* PRE-ASSEMBLED CONNECTOR



MF60B			
CITROËN			
C3 I (FC_, FN_) 1.4 HDi	02/02 → 12/09	*	
FIAT			
500 (312_, 319_) 1.2 (312AXA1A)	07/07 →	MA7	
PANDA (312_, 319_) 1.2 (312PXA1A)	02/12 →	MA7	
FORD			
KA (RU8) 1.2	10/08 → 10/10	*	
NISSAN			
JUKE (F15) 1.6	06/17 → 12/19	M11	
TOYOTA			
YARIS (_P21_, _PA1_, _PH1_) 1.5 Hybrid (MXP10, MXP11)	02/20 →	*	
VOLKSWAGEN			
POLO V (6R1, 6C1) 1.2 TSI 16V	02/14 → 10/17	MA5	
TIGUAN (5N_) 2.0 TDI 4motion	09/07 → 07/18 11/10 → 05/16	MA7 MA7	
UP! (121, 122, BL1, BL2, BL3, 123) 1.0	08/11 → 08/20	MA5	

MF65B			
CITROËN			
C1 (PM_, PN_) 1.0	06/05 → 09/14	*	
FORD			
FIESTA VI (CB1, CCN) 1.25	06/08 → 04/17	MA7	
PEUGEOT			
107 (PM_, PN_) 1.0	06/05 → 05/14	*	
208 I (CA_, CC_) 1.2 VTI 82	03/12 → 12/19	MA7	
RENAULT			
CLIO IV (BH_) 0.9 TCe 90 (BHNF, BHMA, BHMH, BHJK, BHJR)	11/12 → 08/21	MA2	
CAPTUR I (J5_, H5_) 1.5 dCi 90 (J5N4, J5M5, J5MW, J5M6, J5AL, J5AJ)	06/13 → 02/16	MA2	
TOYOTA			
AYGO (_B1_) 1.0 (KGB10_, KGB10R)	07/05 → 05/14	*	
C-HR (_X1_) 1.8 Hybrid (ZYX10_, ZYX11_, ZYX10R, ZYX11R)	10/16 →	MA9	
VOLKSWAGEN			
POLO VI (AW1, BZ1, AE1) 1.0 TSI	06/17 →	MA5	
T-ROC (A11, D11) 1.5 TSI	11/17 →	MA5	



MF70B			
FORD			
FIESTA VII (HJ, HF) 1.0 EcoBoost	05/17 →	MA7	
PUMA (J2K, CF7) 1.0 EcoBoost mHEV	09/19 → 04/24	MA7	
TRANSIT CUSTOM V362 Van (FY, FZ) 2.0 EcoBlue	12/15 → 12/23	MA7	
RENAULT			
CLIO V (B7_) 1.0 TCe 90 (B7MT)	08/20 →	MA12	
TOYOTA			
YARIS (_P13_) 1.0 (KSP130_, KSP130)	12/10 → 06/20	*	
YARIS (_P13_) 1.3 (NSP130_, NSP130)	09/11 → 03/17	*	
YARIS (_P13_) 1.5 (NSP131_)	03/17 → 06/20	*	
YARIS (_P13_) 1.5 Hybrid (NHP130_, NHP130)	03/12 → 06/20	*	
VOLKSWAGEN			
TOURAN (1T1, 1T2) 1.9 TDI	08/03 → 12/05	MA6	

MF75B			
CITROËN			
C4 II (NC_) 1.6 HDi 90	11/09 →	MA7	
C4 GRAND PICASSO I (UA_) 1.6 HDi	10/06 → 03/08 04/08 → 06/11	MA6 MA2	
FORD			
TRANSIT CUSTOM V362 Van (FY, FZ) 2.0 EcoBlue	12/15 → 12/23	MA7	
RENAULT			
SCÉNIC III (JZ0/1_) 1.5 dCi	04/09 → 09/16	MA2	
GRAND SCÉNIC III (JZ0/1_) 1.5 dCi (JZ09, JZ0D, JZ10, JZ14, JZ1G, JZ29, JZ2C)	04/09 → 09/16	MA2	

MF80B			
CITROËN			
C4 PICASSO I MPV (UD_) 1.6 HDi	02/07 → 03/08 04/08 → 08/13	MA6 MA2	
C4 PICASSO I MPV (UD_) 1.6 HDi 110	09/10 → 08/13	MA2	
C4 GRAND PICASSO I (UA_) 1.6 HDi	10/06 → 03/08 04/08 → 06/11	MA6 MA2	
C4 PICASSO II 1.6 HDi / BlueHDi 115	02/13 → 03/18	MA7	
C4 PICASSO II 1.6 BlueHDi 120	07/14 → 12/18	MA7	
PEUGEOT			
3008 I MPV (OU_) 1.6 HDi	06/09 → 08/16 12/09 → 08/16 03/13 → 08/16	MA7 MA7 MA7	

FLAT TECHNOLOGY

TWIN FLAT

An updated range of **85 dedicated kits** designed and sized for specific applications and for efficient coverage of vehicles currently in circulation in Europe.

Flat technology and **pre-assembled connector system**.

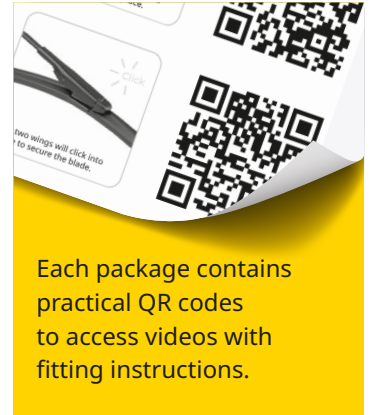
Fitting instructions included to guarantee easier installation.

Graphite-coated rubber to reduce friction and noise.

Twin flat kits are a practical, high-quality and modern alternative; they guarantee efficient cleaning in all weather conditions, removing any dust, pollen, water or snow that settles on the windscreen.



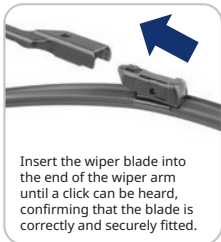
TWIN FLAT – Fitting Instructions



PUSH BUTTON (19 mm)



PUSH BUTTON (22 mm)



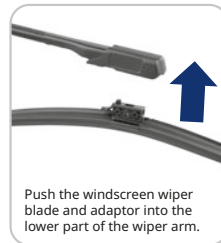
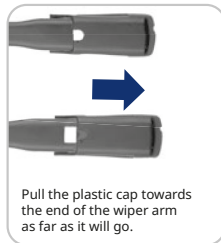
SIDE PIN (22 mm)



APC



SLIDE BUTTON



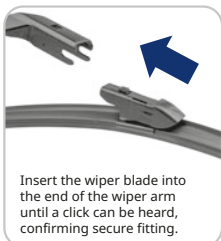
EURO BAYONET



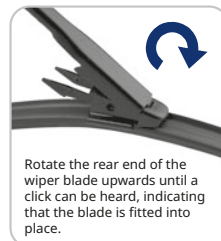
TTL



NOTCHED PUSH BUTTON



PINCH TAB



TWIN FLAT – Blade-arm compatibility

THE CONNECTOR IS PRE-ASSEMBLED

ARM TYPE										
PUSH BUTTON (19 mm)	PUSH BUTTON (22 mm)	APC	EURO BAYONET	NOTCHED PUSH BUTTON	SIDE PIN (22 mm)	SLIDE BUTTON	TTL	PINCH TAB	PINCH TAB 2	STD HOOK
TW6040D	TW5348C	TW6543J	TW5853E	TW6540G	TW5545A	TW5555F	TW6040H	TW5050B	TW6035N	TW4548K
TW6048D	TW6035C	TW6548J	TW6040E	TW6550G	TW6040A	TW6045F	TW7030H	TW5545B		TW5050K
TW6050D	TW6038C		TW6045E	TW7040G	TW6048A	TW6055F		TW5550B		TW5348K
TW6060D	TW6040C		TW6535E		TW6060A	TW6560F		TW6045B		TW5540K
TW6540D	TW6043C		TW6540E		TW6543A	TW7045F		TW6048B		TW6040K
TW6545D	TW6045C		TW6548E		TW6548A			TW6050B		TW6045K
TW6548D	TW6048C		TW7565EO		TW6565A			TW6500B		TW6050K
TW6553D	TW6053C				TW6863CO			TW6538B		TW6053K
	TW6535C							TW6540B		TW6535K
	TW6538C							TW6560B		TW6540K
	TW6540C							TW6565B		TW6545K
	TW6548C							TW7055BO		
	TW6550C							TW7065BO		
	TW6555C							TW7565BO		
	TW6565CO							TW7575BO		
	TW6858CO									
	TW6863CO									
	TW7035C									
	TW7043C									
	TW7060CO									
	TW7373CO									
	TW7550C									
	TW7570CO									
	TW8070CO									

TWIN FLAT – Main blade applications

THE CONNECTOR IS PRE-ASSEMBLED



TW4548K

FIAT

124 Spider (348_) 03/16 →

MAZDA

MX-5 IV (ND_) 04/15 →

MX-5 RF Targa (ND) 10/16 →

MINI

MINI (F55) 09/13 → 12/23

MINI (F56) 12/13 → 12/23

MINI (R50, R53) 06/01 → 09/06

MINI (R56) 11/05 → 01/14

MINI Convertible (F57) 01/15 →

MINI Convertible (R52) 04/04 → 07/08

MINI Convertible (R57) 10/07 → 06/15

TW5050B

BMW

1 (E81) 09/06 → 09/12

1 (E87) 02/03 → 01/13

1 Coupe (E82) 10/06 → 10/13

1 Convertible (E88) 12/07 → 12/13

TW5050K

BMW

3 (E30) 09/82 → 03/92

Z3 Roadster (E36) 10/95 → 01/03

DACIA

DUSTER (HS_) 04/10 → 10/14

LADA

SAMARA (2108, 2109, 2113, 2114) 09/84 → 12/13

RENAULT

19 II (B/C53_) 01/91 → 06/01

19 II Chamade (L53_) 04/92 → 08/03

CLIO I (B/C57_, 5/357_) 03/94 → 08/99

KANGOO (KC0/1_) 08/97 →

KANGOO Express (FC0/1_) 08/97 →

SEAT

TOLEDO I (1L2) 01/91 → 10/99

TW5348C

SEAT

CORDOBA (6L2) 01/07 → 11/09

IBIZA III (6L1) 05/06 → 11/09

TW5348K

AUDI

A3 (8L1) 09/96 → 12/02

CHEVROLET

LACETTI (J200) 03/03 →

SEAT

IBIZA II (6K1) 03/93 → 05/02

LEON (1M1) 11/99 → 06/06



TW5348K

SKODA

FABIA I (6Y2) 08/99 → 03/08

FABIA I Combi (6Y5) 04/00 → 12/07

OCTAVIA I (1U2) 09/96 → 12/10

SUZUKI

IGNIS III (MF, FF) 02/16 →

TOYOTA

HILUX VII Pickup (_N1_, _N2_, _N3_) 08/04 → 02/16

VOLKSWAGEN

GOLF III (1H1) 10/89 → 11/00

TW5540K

FIAT

PANDA (169_) 09/03 →

PUNTO (176_) 09/93 → 09/99

FORD

FIESTA V (JH_, JD_) 11/01 → 12/14

FUSION (JU_) 08/02 → 12/12

HYUNDAI

i10 I (PA) 10/07 → 12/13

i10 II (BA, IA) 01/14 → 12/21

KIA

PICANTO I (SA) 04/04 → 04/11

PICANTO II (TA) 05/11 → 02/17

MAZDA

2 Hatchback (DL, DJ) 08/14 →

SUZUKI

SWIFT IV (FZ, NZ) 10/10 → 12/16

TW5545A

OPEL

ASTRA H (A04) 01/04 → 05/14

ASTRA H Estate (A04) 08/04 → 05/14

ASTRA H GTC (A04) 03/05 → 10/10

ASTRA H Saloon (A04) 02/07 → 05/14

ASTRA H TwinTop (A04) 09/05 → 10/10

VAUXHALL

ASTRA Mk V (H) (A04) 01/04 → 12/08

ASTRA Mk V (H) Estate (A04) 08/04 → 12/10

ASTRA Mk V (H) Sport Hatch (A04) 02/05 → 12/08

ASTRA Mk V (H) TwinTop (A04) 09/05 → 08/11

ASTRAVAN Mk V (H) Estate Van (A04) 03/05 →

TW5545B

BMW

1 (F20) 07/11 → 06/19

1 Van (F20) 03/15 → 06/19

1 (F21) 12/11 → 12/19

2 Coupe (F22, F87) 10/12 → 06/21

2 Convertible (F23) 03/14 → 06/21

TWIN FLAT – Main blade applications

THE CONNECTOR IS PRE-ASSEMBLED



TW5550B

AUDI

TT (8J3) 07/06 → 02/15

FORD USA

MUSTANG Coupe 02/14 → 04/23

MUSTANG Convertible 02/14 →

TW5555F

MERCEDES-BENZ

C-CLASS (W205) 01/15 → 12/20

C-CLASS Convertible (A205) 06/16 → 04/23

C-CLASS Coupe (C205) 10/15 → 04/23

C-CLASS T-Model (S205) 09/14 → 12/20

GLC (X253) 06/15 → 12/21

GLC Coupe (C253) 06/16 → 12/21

EQC (N293) 05/19 → 07/23

TW5853E

MERCEDES-BENZ

CITAN Box Body/MPV (W415) 11/12 → 08/21

CITAN MPV (W415) 11/12 → 08/21

RENAULT

KANGOO Express (FW0/1_) 02/08 →

KANGOO / GRAND KANGOO II (KW0/1_) 02/08 →

KANGOO BE BOP (KW0/1_) 02/09 →

KANGOO III Box Body/MPV 06/21 →

TW6035C

ABARTH

500 / 595 / 695 01/08 →

500C / 595C / 695C 05/08 →

500E Hatchback (332_) 02/23 →

FIAT

500 (312_) 07/07 →

500 C (312_) 09/09 →

500e (332_) 10/20 →

500e Convertible (332_) 10/20 →

FORD

KA (RU8) 11/10 → 05/16

NISSAN

JUKE (F16_) 08/19 →

RENAULT

ZOE (BFM_) 06/12 →

TW6035N

MG

MG ZS SUV (AZS1) 10/17 →



TW6038C

CHRYSLER

YPSILON 05/11 →

FIAT

500L (351_, 352_) 09/12 →

PANDA (312_, 319_) 02/12 →

TW6040A

BMW

3 Touring (E91) 12/04 → 08/09

3 Coupe (E92) 01/05 → 08/09

3 Convertible (E93) 05/06 → 08/09

FIAT

CROMA (194_) 06/05 → 12/11

TW6040C

CITROËN

C3 PICASSO (SH_) 12/08 → 03/10

C4 III (BA_, BB_, BC_) 10/20 →

FIAT

DOBLO Cargo (263_) 02/10 →

FORD

KUGA I 02/08 → 11/12

RANGER (TKE) 09/15 →

OPEL

CORSA F (P2JO) 07/19 →

PEUGEOT

208 II (UB_, UP_, UW_, UJ_) 06/19 →

RENAULT

TWINGO II (CNO_) 03/07 →

SEAT

IBIZA IV (6J5, 6P1) 03/08 → 12/17

IBIZA IV SC (6J1, 6P5) 06/08 → 12/18

TW6040D

AUDI

A1 (8X1, 8XK) 05/10 → 09/19

A1 Sportback (8XA, 8XF) 09/11 → 09/19

SEAT

Mii (KF1, KE1) 10/11 →

SKODA

CITIGO (NF1) 10/11 → 08/19

FABIA III (NJ3) 08/14 → 10/21

FABIA III Estate (NJ5) 08/14 → 12/22

RAPID (NH3, NK3, NK6) 07/12 → 03/22

RAPID Spaceback (NH1) 07/12 → 12/19

VOLKSWAGEN

POLO V (6R1, 6C1) 03/09 → 06/22

UP! (121, 122, BL1, BL2, BL3, 123) 08/11 →

THE CONNECTOR IS PRE-ASSEMBLED



TW6040E

CITROËN	
DS3 (SA_)	11/09 → 12/16
DS3 Convertible	01/13 → 07/15
DS	
DS 3 (SA_)	04/15 → 07/19
RENAULT	
CLIO III (BR0/1, CR0/1)	01/05 → 12/14
CLIO III Grandtour (KR0/1_)	11/07 →
FLUENCE (L3_)	02/10 →
MEGANE III Hatchback (BZ0/1_, B3_)	11/08 → 08/15
MEGANE III Coupe (DZ0/1_)	11/08 → 09/16
MEGANE III Grandtour (KZ0/1)	11/08 → 01/16
MEGANE CC (EZ0/1_)	06/10 → 08/15

TW6040H

DACIA	
JOGGER (RK_)	09/21 →
SANDERO III	01/21 →

TW6040K

HYUNDAI	
i20 I (PB, PBT)	08/08 → 12/15
i20 II (GB, IB)	11/14 → 08/21
i20 II Coupe (GB)	03/15 → 09/21
ix35 (LM, EL, ELH)	08/09 → 10/16
TUCSON (JM)	06/04 → 04/15
NISSAN	
X-TRAIL II (T31)	03/07 → 12/18
RENAULT	
SCÉNIC I MPV (JA0/1_, FA0_)	08/99 → 07/10
SUZUKI	
VITARA (LY)	02/15 →
TOYOTA	
YARIS (_P21_, _PA1_, _PH1_)	02/20 →
YARIS CROSS (MXP_)	09/20 →

TW6043C

CITROËN	
BERLINGO (ER_, EC_)	06/18 →
BERLINGO Box Body/MPV (K9)	06/18 →
FIAT	
DOBLO Box Body/MPV (510_, 511_)	06/22 →
MG	
MG GS	05/16 →
MG HS (AS23)	09/18 →
OPEL	
COMBO Box Body/MPV (K9)	06/18 →
PEUGEOT	
PARTNER Box Body/MPV (K9)	09/18 →
RIFTER	09/18 →



TW6043C

VAUXHALL	
COMBO Mk IV (E) Box Body/MPV (K9)	06/18 →
COMBO Mk IV (E) Life (K9)	06/18 →

TW6045B

BMW	
4 Coupe (F32, F82)	07/13 → 06/20
4 Convertible (F33, F83)	10/13 → 10/20
4 Gran Coupe (F36)	03/14 → 05/21
4 Coupe (G22, G82)	07/20 →
4 Convertible (G23, G83)	11/20 →
4 Gran Coupe (G26)	07/21 →
i4 (G26)	11/21 →
MG	
MG 6 Hatchback	11/10 →
MG 6 Saloon	11/10 →

TW6045C

FIAT	
BRAVO II (198_)	11/06 → 12/16
HYUNDAI	
i30 (FD)	10/07 → 03/10
KIA	
CEE'D Hatchback (ED)	12/06 → 06/09
CEE'D SW (ED)	07/07 → 06/09
PEUGEOT	
308 II (LB_, LP_, LW_, LH_, L3_)	09/13 → 06/21
308 SW II (LC_, LJ_, LR_, LX_, L4_)	03/14 → 06/21
VOLKSWAGEN	
TOURAN (1T3)	05/10 → 06/15
CADDY ALLTRACK IV Box Body/MPV (SAA)	07/17 → 09/20
CADDY IV MPV (SAB, SAJ)	05/15 → 06/17
CADDY IV Box Body/MPV (SAA, SAH)	07/17 → 12/20

TW6045E

RENAULT	
MEGANE II (BM0/1_, CM0/1_)	11/05 → 10/12
MEGANE II Coupé-Cabriolet (EM0/1_)	11/05 → 03/10
MEGANE II Estate (KM0/1_)	11/05 → 08/12
MEGANE II Saloon (LM0/1_)	11/05 →
MEGANE IV Hatchback (B9A/M/N_)	11/15 →
MEGANE IV Grandtour (K9A/M/N_)	04/16 →

TW6045F

MERCEDES-BENZ	
A-CLASS (W177)	03/18 →
A-CLASS Saloon (V177)	09/18 →

TWIN FLAT – Main blade applications

THE CONNECTOR IS PRE-ASSEMBLED



TW6045K

CHEVROLET

CRUZE (J300) 05/09 →

CITROËN

C3 I (FC_, FN_) 02/02 → 12/13

JEEP

COMPASS (MP, M6, MV, M7) 01/16 →

KIA

SPORTAGE III (SL) 09/09 → 12/15

MAZDA

3 (BM, BN) 07/13 → 05/19

CX-5 (KE, GH) 11/11 → 02/17

MITSUBISHI

LANCER VII (CS_A, CT_A) 01/00 → 12/13

OPEL

INSIGNIA A (G09) 07/08 → 12/16

INSIGNIA A Sports Tourer (G09) 07/08 → 12/16

VAUXHALL

INSIGNIA Mk I (A) Hatchback (G09) 07/08 → 12/16

TW6048A

AUDI

A3 (8P1) 05/03 → 12/04

BMW

3 (E90) 02/04 → 08/09

SKODA

OCTAVIA II (1Z3) 02/04 → 12/12

OCTAVIA II Combi (1Z5) 02/04 → 12/12

VOLKSWAGEN

GOLF V (1K1) 10/03 → 10/05

TW6048B

AUDI

A3 Sportback (8PA) 01/05 → 12/13

BMW

3 (F30, F80) 11/11 → 10/18

3 Touring (F31) 07/12 → 06/19

3 (G20, G80, G28) 11/18 →

3 Touring (G21, G81) 07/19 →

X1 (E84) 03/09 → 06/15

JAGUAR

XF I (X250) 03/08 → 04/15

MERCEDES-BENZ

A-CLASS (W176) 06/12 → 06/15

CLA Coupe (C117) 01/13 → 06/15

GLA-CLASS (X156) 12/13 → 08/15



TW6048C

SKODA

YETI (5L) 05/09 → 12/17

VOLKSWAGEN

EOS (1F7, 1F8) 03/06 → 08/15

GOLF V Variant (1K5) 01/07 → 10/09

GOLF VI (5K1) 10/08 → 12/14

GOLF VI Variant (AJ5) 07/09 → 07/14

JETTA III (1K2) 09/04 → 12/13

PASSAT B6 (3C2) 03/05 → 04/11

PASSAT B6 Variant (3C5) 08/05 → 11/11

PASSAT CC B6 (357) 02/08 → 06/12

SCIROCCO III (137, 138) 05/08 → 01/18

TW6048D

AUDI

Q2 (GAB, GAG) 06/16 →

POLESTAR

POLESTAR 2 (534) 02/19 →

SKODA

OCTAVIA III (5E3, NL3, NR3) 11/12 → 12/20

OCTAVIA III Combi (5E5, 5E6) 11/12 → 12/20

VOLKSWAGEN

CC B7 (358) 11/11 → 10/17

GOLF VI Convertible (517) 03/11 → 10/17

JETTA IV (162, 163, AV3, AV2) 01/08 → 12/19

PASSAT B7 (362) 08/10 → 04/16

PASSAT B7 Variant (365) 09/11 → 12/15

PASSAT ALLTRACK B7 (365) 09/11 → 12/14

TW6050B

FORD

KUGA III (DFK) 07/19 →

LAND ROVER

FREELANDER 2 (L359) 10/06 → 12/15

FREELANDER 2 VAN (L359) 10/06 → 10/14

TW6050D

AUDI

A4 B8 (8K2) 08/07 → 06/17

A4 B8 Avant (8K5) 11/07 → 06/17

A4 B9 Avant (8W5, 8WD) 01/16 →

A5 Sportback (8TA) 07/07 → 10/17

Q3 (8UB, 8UG) 06/11 → 03/20

Q3 (F3B) 07/18 →

Q5 (8RB) 11/08 → 04/19

Q5 (FYB, FYG) 05/16 →

PORSCHE

MACAN (95B) 02/14 →

VOLVO

XC40 (536) 10/17 →

THE CONNECTOR IS PRE-ASSEMBLED



TW6050K	
BMW	
X5 (F15, F85)	08/13 → 07/18
CITROËN	
XANTIA (X1_, X2_)	03/93 → 04/03
KIA	
SORENTO II (XM)	09/09 → 04/16
SOUL II (PS)	02/14 → 06/19
SOUL I (AM)	01/09 → 03/14
LAND ROVER	
RANGE ROVER SPORT II (L494)	04/13 → 03/22
RANGE ROVER IV (L405)	08/12 → 09/21
MITSUBISHI	
ECLIPSE CROSS (GK_, GL_)	10/17 →
RENAULT	
LAGUNA II (BG0/1_)	03/01 → 12/07
LAGUNA II Grandtour (KG0/1_)	03/01 → 12/07

TW6053C	
BMW	
Z4 Roadster (G29)	11/18 →
LAND ROVER	
RANGE ROVER EVOQUE (L538)	06/11 → 12/19
RANGE ROVER EVOQUE Convertible (L538)	11/15 → 12/19
RANGE ROVER EVOQUE VAN (L538)	06/11 → 12/19
TOYOTA	
SUPRA (DB_)	03/19 →
VOLKSWAGEN	
TIGUAN (5N_)	09/07 → 07/18
TIGUAN VAN (5N_)	09/07 → 07/18

TW6053K	
MITSUBISHI	
ASX (GA_W_)	11/09 → 12/22
OUTLANDER II (CW_W)	01/07 → 12/12
MERCEDES-BENZ	
SPRINTER 3-t Platform/Chassis (B903)	01/95 → 05/06
SPRINTER 3-t Van (B903)	01/95 → 05/06
OPEL	
VIVARO A Platform/Chassis (X83)	02/01 → 07/14
VIVARO A Van (X83)	08/01 → 07/14
RENAULT	
TRAFIC II Platform/Chassis (EL)	03/01 → 12/13
TRAFIC II Van (FL)	03/01 → 12/13
TRAFIC II Bus (JL)	03/01 → 12/13
VAUXHALL	
VIVARO A Van (X83)	08/01 → 07/14



TW6055F	
MERCEDES-BENZ	
E-CLASS Convertible (A238)	06/17 → 12/22
E-CLASS Coupe (C238)	12/16 → 12/22
E-CLASS T-Model (S213)	07/16 → 12/22
E-CLASS All-Terrain (S213)	01/17 → 12/22
E-CLASS (W213)	01/16 → 12/22
EQB (X243)	09/21 →
GLB (X247)	07/19 →

TW6060A	
MERCEDES-BENZ	
C-CLASS (W204)	01/07 → 12/12
C-CLASS Coupe (C204)	01/11 → 02/13
C-CLASS T-Model (S204)	08/07 → 02/13
E-CLASS (W212)	01/09 → 02/13
E-CLASS Coupe (C207)	01/09 → 02/13
E-CLASS T-Model (S212)	08/09 → 02/13
VOLKSWAGEN	
MULTIVAN T5 (7HM, 7HN, 7HF, 7EF, 7EM, 7EN)	04/03 → 05/13
TRANSPORTER T5 Bus (7HB, 7HJ, 7EB, 7EJ)	04/03 → 05/13
TRANSPORTER T5 Platform/Chassis (7JD, 7JE, 7JL, 7JY, 7JZ, 7F...)	04/03 → 05/13
TRANSPORTER T5 Van (7HA, 7HH, 7EA, 7EH)	04/03 → 05/13

TW6060D	
VOLKSWAGEN	
AMAROK (2HA, 2HB, S1B, S6B, S7A, S7B, AGD)	05/12 →
CALIFORNIA T6 Camper (SGC, SGG, SHC)	04/15 → 08/24
MULTIVAN T6 (SGF, SGM, SGN, SHM, SHN)	04/15 →
TRANSPORTER T6 Van (SGA, SGH, SHA, SHH)	04/15 → 08/24
TRANSPORTER T6 / CARAVELLE T6 Bus (SGB, SGJ, SHB, SHJ)	04/15 → 08/24
TRANSPORTER T6 Platform/Chassis (SFD, SFE, SFL, SFZ, SJD, SJ)	04/15 → 08/24

TW6500B	
CITROËN	
C1 II (PA_, PS_)	04/14 → 07/21
PEUGEOT	
108	05/14 →
TOYOTA	
AYGO (_B4_)	05/14 →

TWIN FLAT – Main blade applications

THE CONNECTOR IS PRE-ASSEMBLED



TW6535C

CHEVROLET

TRAX 12/12 →

FIAT

500X (334_) 09/14 →

HYUNDAI

ix20 (JC) 11/10 → 07/19

KIA

VENGA (YN) 02/10 → 03/19

NISSAN

PULSAR Hatchback (C13) 10/14 →

OPEL

MOKKA / MOKKA X (J13) 06/12 → 12/19

RENAULT

CAPTUR II (HF_) 01/20 →

VAUXHALL

MOKKA / MOKKA X (J13) 06/12 →

TW6535E

RENAULT

CAPTUR I (J5_, H5_) 06/13 → 02/16

CLIO IV (BH_) 11/12 → 08/21

TW6535K

KIA

CEE'D (JD) 05/12 → 05/18

HONDA

JAZZ III (GE_, GG_, GP_, ZA_) 10/07 →

HYUNDAI

i30 (GD) 06/11 → 12/16

NISSAN

MICRA V (K14) 01/17 →

SUZUKI

SX4 (EY, GY) 06/06 →

TOYOTA

AURIS (_E18_) 10/12 → 01/19

AURIS Estate (_E18_) 07/13 → 12/18

COROLLA Estate (_E21_) 02/19 →

COROLLA Hatchback (_E21_, _EA1_, _EH1_) 10/18 →

COROLLA Saloon (_E21_) 01/19 →

TW6538B

ABARTH

GRANDE PUNTO 07/07 → 06/10

PUNTO EVO 07/08 → 02/12

CHEVROLET

AVEO Hatchback (T300) 03/11 →



TW6538B

FIAT

GRANDE PUNTO (199_) 06/05 →

GRANDE PUNTO Van (199_) 10/05 → 06/13

PUNTO (199_) 01/12 →

PUNTO EVO (199_) 07/08 →

PUNTO Hatchback Van (199_) 04/08 →

TW6538C

FORD

FIESTA VI (CB1, CCN) 06/08 →

FIESTA VI Van 08/08 → 04/17

TW6540B

ALFA ROMEO

MITO (955_) 08/08 → 10/18

OPEL

CORSA D (S07) 07/06 → 04/15

CORSA D Hatchback Van (S07) 07/06 → 08/14

CORSA E (X15) 09/14 →

CORSA E Hatchback Van (X15) 09/14 →

VAUXHALL

CORSA Mk III (D) (S07) 07/06 → 08/14

CORSAVAN Mk III (D) Hatchback Van (S07) 07/06 →

CORSA Mk IV (E) (X15) 08/14 →

CORSAVAN Mk IV (E) Hatchback Van (X15) 10/14 →

TW6540C

CITROËN

C3 III (SX) 07/16 →

BERLINGO Box Body/MPV (B9) 04/08 →

BERLINGO MULTISPACE (B9) 04/08 →

FIAT

TIPO Estate (356_, 357_) 03/16 →

TIPO Hatchback (356_, 357_) 03/16 →

PEUGEOT

208 I (CA_, CC_) 03/12 → 06/21

2008 I (CU_) 03/13 →

2008 II (UD_, US_, UY_, UJ_, UR_, UC_) 08/19 →

PARTNER Box Body/MPV 04/08 → 12/17

PARTNER TEPEE 04/08 → 12/17

TW6540D

BMW

X1 (F48) 11/14 → 12/22

X1 (U11) 07/22 →

CITROËN

C3 AIRCROSS II (2R_, 2C_) 06/17 →

FORD USA

RANGER Crew Cab Pickup 03/22 →

THE CONNECTOR IS PRE-ASSEMBLED



TW6540D	
OPEL	
CROSSLAND X / CROSSLAND (P17, P2QO)	03/17 →
SEAT	
LEON (5F1)	09/12 → 06/20
LEON SC (5F5)	01/13 → 12/18
LEON ST (5F8)	09/12 → 08/20
VAUXHALL	
CROSSLAND X / CROSSLAND (P17)	03/17 →
VOLKSWAGEN	
AMAROK (T1A, T1B)	09/22 →

TW6540E	
CITROËN	
C3 II (SC_)	09/09 →
RENAULT	
LAGUNA Coupe (DT0/1)	09/08 → 12/15

TW6540K	
HYUNDAI	
KONA (OS, OSE, OSI)	06/17 → 04/23
TUCSON (TL, TLE)	05/15 → 09/20
KIA	
RIO III (UB)	09/11 → 12/17
RIO IV (YB, SC, FB)	01/17 →
SPORTAGE IV (QL, QLE)	01/15 → 12/21
NISSAN	
QASHQAI II (J11, J11_)	11/13 → 12/20
X-TRAIL III (T32_, T32R, T32RR)	10/13 →
PEUGEOT	
206 Hatchback (2A/C)	08/98 → 12/12
TOYOTA	
AURIS (_E15_)	10/06 → 09/12
RAV 4 IV (_A4_)	12/12 → 09/19

TW6540G	
LEXUS	
NX (_Z1_)	07/14 →
SUBARU	
FORESTER (SK_)	04/18 →
IMPREZA Hatchback (GT_)	10/16 →
XV (GT)	04/17 →
TOYOTA	
C-HR (_X1_)	10/16 →
C-HR VAN (_X1_)	10/16 →

TW6543A	
FORD	
FOCUS II (DA_, HCP, DP)	07/04 → 09/13
FOCUS II Turnier (DA_, FFS, DS)	07/04 → 09/12
FOCUS II Saloon (DB_, FCH, DH)	04/05 →
FOCUS II Convertible	10/06 → 09/10



TW6543A	
PEUGEOT	
207 (WA_, WC_)	02/06 → 12/15
207 CC (WD_)	02/07 → 01/15
207 SW (WK_)	02/07 → 12/13
207 Hatchback Van (WA_, WC_)	04/06 →

TW6543J	
BMW	
1 (F40)	07/19 → 06/24
1 (F52)	01/17 → 06/24
2 Gran Coupe (F44)	11/19 →

TW6545D	
AUDI	
A3 Sportback (8VA, 8VF)	01/14 → 08/21
SEAT	
ARONA (KJ7, KJP)	07/17 →
ATECA (KH7, KHP)	04/16 →
IBIZA V (KJ1, KJG)	01/17 →
SKODA	
KAROQ (NU7, ND7)	07/17 →
VOLKSWAGEN	
GOLF VII (5G1, BQ1, BE1, BE2)	08/12 → 10/21
GOLF VII Variant (BA5, BV5)	04/13 → 01/22
GOLF VIII (CD1, DA1)	07/19 →
PASSAT B8 Variant (3G5, CB5)	08/14 → 12/23
POLO VI (AW1, BZ1, AE1)	06/17 →

TW6545K	
HONDA	
CIVIC IX (FK)	02/12 → 07/17
CIVIC X Hatchback (FC_, FK_)	09/16 →
CIVIC X Saloon (FC_)	09/15 →
HR-V (RU)	11/14 → 03/21
HYUNDAI	
IONIQ (AE)	03/16 → 03/23
KIA	
OPTIMA (JF)	09/15 →
LEXUS	
C LEXUS T (ZWA10_)	12/10 →
MITSUBISHI	
OUTLANDER III (GG_W, GF_W, ZJ, ZL, ZK)	01/13 → 05/21
RENAULT	
ARKANA I (LCM_, LDN_)	08/19 →
SMART	
FORFOUR (454)	01/04 → 06/06

TWIN FLAT – Main blade applications

THE CONNECTOR IS PRE-ASSEMBLED



TW6548A

BMW

X3 (F25) 09/10 → 12/17

FORD

C-MAX (DM2) 02/07 → 09/10

FOCUS C-MAX (DM2) 10/03 → 03/07

TW6548C

BMW

2 Active Tourer (F45) 11/13 → 10/21

2 Gran Tourer (F46) 07/14 →

5 (G30, F90) 09/16 →

5 Touring (G31) 03/17 →

FORD

MONDEO IV (BA7) 03/07 → 01/15

MONDEO IV Turnier (BA7) 03/07 → 01/15

JAGUAR

F-PACE (X761) 09/15 →

OPEL

VIVARO B Van (X82) 06/14 → 12/19

RENAULT

TRAFIC III Van (FG_) 05/14 →

VOLVO

V40 Hatchback (525) 03/12 → 08/19

TW6548D

SKODA

OCTAVIA IV (NX3, NN3, PV3) 01/21 →

OCTAVIA IV Combi (NX5, PV5) 01/21 →

TESLA

MODEL 3 (5YJ3) 01/17 →

MODEL Y (5YJY) 03/19 →

VOLKSWAGEN

ARTEON (3H7, 3H8) 03/17 →

ARTEON SHOOTING BRAKE (3H9) 06/20 →

T-ROC (A11, D11) 07/17 →

T-ROC Convertible (AC7, AC8) 12/19 →

TW6548E

CITROËN

JUMPY III Van (V_) 04/16 →

NEMO Box Body/MPV (AA_) 02/08 →

SPACETOURER Bus (V_) 04/16 →

FIAT

FIORINO Box Body/MPV (225_) 01/07 →

QUBO (225_) 02/08 →

OPEL

VIVARO C Van (K0) 01/20 →

PEUGEOT

EXPERT Van (V_) 04/16 →



TW6548E

TOYOTA

PROACE CITY Box Body/MPV (BPZ_) 10/19 →

PROACE Van (MDZ_) 02/16 →

VAUXHALL

VIVARO C Van (K0) 03/19 →

TW6548J

AUDI

A3 Sportback (8YA, 8YF) 11/19 →

A3 Allstreet (8YJ) 02/24 →

A3 Limousine (8YS, 8YM) 03/20 →

TW6550C

BMW

X5 (G05, F95) 08/18 →

FORD

FOCUS IV (HN) 01/18 →

FOCUS IV Turnier (HP) 09/18 →

LEXUS

RX (L2_) 01/16 → 05/22

VOLVO

C30 (533) 09/06 → 12/13

S60 II (134) 04/10 → 12/19

V60 I (155) 07/10 → 12/18

V70 III (135) 04/07 → 04/16

XC60 I SUV (156) 05/08 → 12/17

XC70 II (136) 04/07 → 12/16

TW6550G

BMW

X3 (G01, F97, G08) 07/17 →

X4 (G02, F98) 04/18 →

JAGUAR

E-PACE (X540) 09/17 →

TOYOTA

MIRAI (JPD1_) 12/14 → 05/20

TW6553D

AUDI

A6 C7 (4G2, 4GC) 11/10 → 11/19

A6 C7 Avant (4G5, 4GD) 05/11 → 11/19

A6 Allroad C7 (4GH, 4GJ) 01/12 → 09/18

A7 Sportback (4GA, 4GF) 07/10 → 11/19

LAND ROVER

RANGE ROVER EVOQUE (L551) 12/18 →

PORSCHE

CAYENNE (9YA) 05/17 →

SEAT

TARRACO (KN2) 09/18 → 05/24

THE CONNECTOR IS PRE-ASSEMBLED



TW6553D	
VOLKSWAGEN	
TIGUAN (AD1, AX1)	01/16 → 04/24
TIGUAN ALLSPACE (BW2, BJ2)	03/17 → 12/23
TOUAREG (CR7, RC8)	11/17 →

TW6555C	
CITROËN	
JUMPER II Van	04/06 →
JUMPER II Platform/Chassis	04/06 →
FIAT	
DUCATO Bus (250_)	07/06 →
DUCATO Van (250_)	07/06 →
DUCATO Platform/Chassis (250_)	07/06 →
OPEL	
MOVANO C Van (U9)	12/21 →
PEUGEOT	
BOXER Bus	04/06 →
BOXER Van	04/06 →
BOXER Platform/Chassis	04/06 →
VAUXHALL	
MOVANO Mk III (C) VAN (U9)	12/21 →

TW6560B	
MERCEDES-BENZ	
SPRINTER 3-t Van (B906)	06/06 → 12/17
SPRINTER 3-t Platform/Chassis (B906)	06/06 → 12/17
SPRINTER 3,5-t Van (B906)	06/06 → 12/17
SPRINTER 3,5-t Platform/Chassis (B906)	06/06 → 12/17
SPRINTER 3,5-t Bus (B906)	06/06 → 12/17
SPRINTER 4,6-t Platform/Chassis (B906)	06/06 → 12/17
SPRINTER 5-t Platform/Chassis (B906)	06/06 → 12/17
SPRINTER 5-t Van (B906)	06/06 → 12/17
VOLKSWAGEN	
CRAFTER 30-50 Van (2E_)	04/06 → 12/16
CRAFTER 30-50 Platform/Chassis (2F_)	04/06 → 12/16

TW6560F	
MERCEDES-BENZ	
SPRINTER 3-t Van (B910)	02/18 →
SPRINTER 3-t Platform/Chassis (B910, B907)	02/18 →
SPRINTER 3,5-t Van (B907, B910)	02/18 →
SPRINTER 3,5-t Platform/Chassis (B907, B910)	02/18 →
SPRINTER 3,5-t Tourer Bus (B907)	02/18 →
SPRINTER 4-t Van (B907, B910)	02/18 →
SPRINTER 4-t Tourer Bus (B907)	02/18 →
SPRINTER 4-t Platform/Chassis (B907, B910)	02/18 →
SPRINTER 5-t Platform/Chassis (B907)	02/18 →
SPRINTER 5-t Van (B907)	02/18 →



TW6565A	
MERCEDES-BENZ	
CLS (C219)	10/04 → 02/11
E-CLASS (W211)	03/02 → 03/09
E-CLASS T-Model (S211)	02/03 → 07/09
S-CLASS (W220, V220)	04/00 → 08/05
S-CLASS (W221, V221)	09/05 → 12/13
SL (R230)	10/01 → 01/12
PORSCHE	
CAYENNE (92A)	05/10 → 05/18
CAYENNE (9PA)	05/02 → 12/10
VOLKSWAGEN	
TOUAREG (7LA, 7L6, 7L7)	10/02 → 01/13
TOUAREG (7P5, 7P6)	01/10 → 12/17

TW6565B	
AUDI	
Q7 (4LB)	03/06 → 01/16

TW6858CO	
OPEL	
MERIVA B MPV (S10)	06/10 → 03/17
VAUXHALL	
MERIVA Mk II (B) (S10)	01/11 → 03/17

TW6863CO	
OPEL	
ASTRA J (P10)	09/09 → 10/15
ASTRA J Estate Van (P10)	09/09 → 10/15
ASTRA J Sports Tourer (P10)	10/10 → 10/15
ASTRA J GTC	10/11 → 04/18
ASTRA J Saloon	06/12 →
VAUXHALL	
ASTRA Mk VI (J) (P10)	01/10 → 10/15
ASTRA Mk VI (J) Estate (P10)	01/11 → 10/15
ASTRA Mk VI (J) GTC (P10)	10/11 → 10/18

TW6565CO	
CHEVROLET	
VOLT	04/11 →
OPEL	
AMPERA (R12)	11/11 → 03/15
CASCADA (W13)	03/13 → 04/19
PEUGEOT	
508 SW I (8E_)	11/10 → 12/18
508 I (8D_)	11/10 → 12/18
RCZ	03/10 → 12/15
VAUXHALL	
AMPERA (R12)	03/12 →
CASCADA Convertible (W13)	02/13 →

TWIN FLAT – Main blade applications

THE CONNECTOR IS PRE-ASSEMBLED



TW7030H

RENAULT

CLIO V (B7_)	06/19 →
--------------	---------

TW7035C

FORD

FIESTA VII (HJ, HF)	05/17 →
FIESTA VII Van	09/18 →
PUMA (J2K, CF7)	09/19 → 04/24

TOYOTA

C-HR (_X2_, _H2_)	10/23 →
-------------------	---------

TW7040G

TOYOTA

PRIUS (_W5_)	09/15 → 12/22
--------------	---------------

TW7043C

JAGUAR

XE (X760)	03/15 →
XF II (X260)	05/15 →
XF SPORTBRAKE (X260)	07/17 →

OPEL

GRANDLAND / GRANDLAND X (A18, P1UO)	06/17 →
-------------------------------------	---------

TESLA

MODEL S (5YJS)	09/12 →
----------------	---------

VAUXHALL

GRANDLAND X / GRANDLAND (A18)	06/17 →
-------------------------------	---------

TW7045F

MERCEDES-BENZ

V-CLASS (W447)	03/14 → 12/20
VITO Van (W447)	10/14 → 12/20
VITO Tourer (W447)	10/14 → 12/20
VITO Mixto (Double Cabin) (W447)	10/14 → 12/20

TW7055BO

CITROËN

C5 III (RD_)	02/08 → 05/17
C5 III Break (RW_)	02/08 → 05/17

OPEL

ZAFIRA / ZAFIRA FAMILY B (A05)	07/05 → 05/19
--------------------------------	---------------

VAUXHALL

ZAFIRA Mk II (B) (A05)	04/05 → 11/14
------------------------	---------------



TW7060CO

OPEL

ASTRA K (B16)	06/15 → 12/22
ASTRA K Sports Tourer (B16)	11/15 → 12/22

VAUXHALL

ASTRA Mk VII (K) (B16)	07/15 →
ASTRA Mk VII (K) Estate (B16)	07/15 →

TW7065BO

MERCEDES-BENZ

VIANO (W639)	09/05 →
VITO / MIXTO Van (W639)	09/05 →
VITO Bus (W639)	09/05 →

PEUGEOT

307 (3A/C)	10/04 → 12/12
307 Break (3E)	10/04 → 12/09
307 SW (3H)	10/04 → 12/09

TW7373CO

FORD

FOCUS III	07/10 → 02/20
FOCUS III Turnier	07/10 → 02/20
FOCUS III Saloon	07/10 → 02/20
FOCUS III Hatchback Van	01/11 → 02/20
FOCUS III Estate Van	02/12 → 02/20

FORD USA

EDGE	01/14 →
------	---------

TW7550C

FORD

TRANSIT V363 Van (FCD, FDD)	08/13 →
TRANSIT V363 Platform/Chassis (FED, FFD)	08/13 →
TRANSIT V363 Bus (FAD, FBD)	08/13 →

TW7565BO

FORD

B-MAX (JK)	10/12 →
C-MAX II (DXA/CB7, DXA/CEU)	04/10 → 06/19
GRAND C-MAX (DXA/CB7, DXA/CEU)	12/10 → 06/19

TW7565EO

RENAULT

GRAND SCÉNIC III (JZ0/1_)	02/09 → 09/16
SCÉNIC III (JZ0/1_)	12/08 → 09/16
SCÉNIC III VAN (JZ0/1_)	12/08 → 09/16

THE CONNECTOR IS PRE-ASSEMBLED



TW7570CO

FORD	
TRANSIT CUSTOM V362 Bus (F3)	04/12 →
TRANSIT CUSTOM V362 Van (FY, FZ)	09/12 →
TOURNEO CUSTOM V362 Bus (F3)	09/12 →
RENAULT	
ESPACE V (JR_)	02/15 → 03/23

TW7575BO

FORD	
GALAXY III (CK)	01/15 →
S-MAX (CJ, WA6)	01/15 →
TRANSIT CONNECT V408 Box Body/MPV	09/13 →
TRANSIT CONNECT MPV	09/13 →
TOURNEO CONNECT / GRAND TOURNEO CONNECT V408 MPV	09/13 →



TW8070CO

OPEL	
ZAFIRA TOURER C (P12)	10/11 →
PEUGEOT	
3008 Van (0U_)	05/09 → 04/16
3008 I MPV (0U_)	05/09 → 12/17
5008 (0U_, 0E_)	06/09 → 04/17
RENAULT	
SCÉNIC IV (J9_)	09/16 → 07/22
GRAND SCÉNIC IV (R9_)	09/16 → 03/23
VAUXHALL	
ZAFIRA Mk III (P12)	10/11 → 08/18

WiperFinder

Our WiperFinder, available by scanning the QR Code, can also be used for the **TWIN FLAT KIT** range.





REAR WIPERS

A NEW RANGE OF REAR WIPER BLADES

A compact range of 10 rear wiper blades manufactured with a mix of technology that allows for a design that is always similar to the original, in accordance with the fitting application:

- 5 flat-technology models
- 5 plastic models

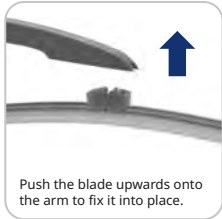
Multi-clip connector system and fitting instructions included to guarantee easier installation



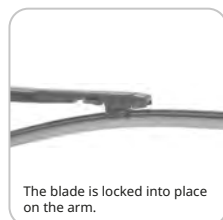
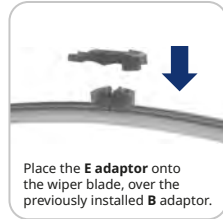
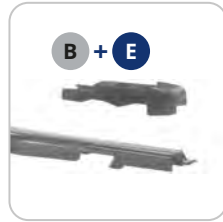
REAR WIPERS – Fitting Instructions

EACH PACK CONTAINS UP TO 5 CONNECTORS

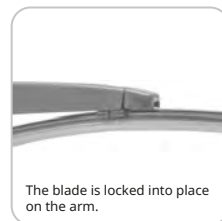
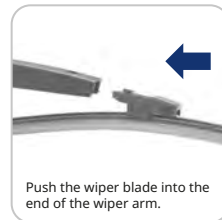
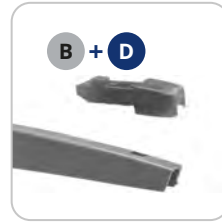
SNAP FIT



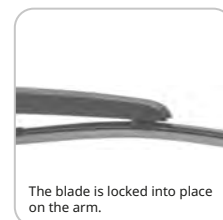
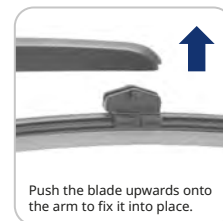
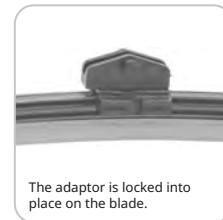
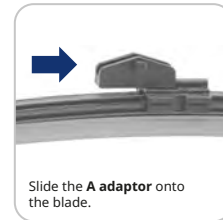
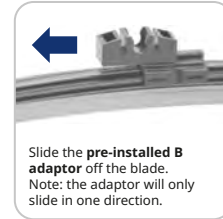
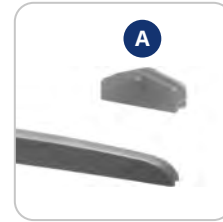
PINCH TAB



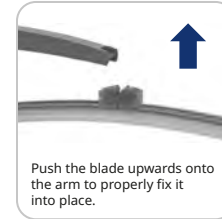
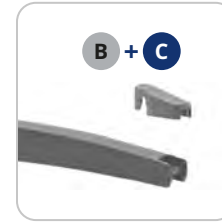
PUSH BUTTON



TRUNNION



V-NOTCH



Each package contains practical QR codes to access videos with fitting instructions.

REAR WIPERS – Fitting Instructions

EACH PACK CONTAINS UP TO 5 CONNECTORS

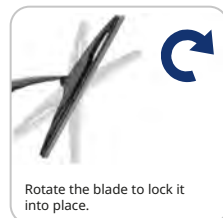
ROC LOCK 2



ROC LOCK 3



ROC LOCK 4



SNAP CLAW HP



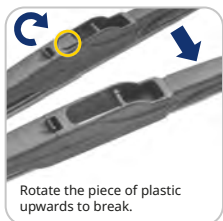
SNAP CLAW SHORT



REAR WIPERS

Blade-arm-connector compatibility

SNAP CLAW LP



REAR FLAT RANGE

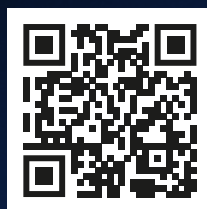
		ARM TYPE				
		SNAP FIT	PINCH TAB	PUSH BUTTON	TRUNNION	V-NOTCH
FR25B	B pre-assembled		B + E	B + D	A	
FR28B	B pre-assembled		B + E	B + D	A	B + C
FR33B	B pre-assembled			B + D	A	B + C
FR35B	B pre-assembled		B + E	B + D	A	
FR40B	B pre-assembled			B + D	A	B + C

REAR PLASTIC RANGE

		ARM TYPE					
		ROC-LOCK 2	ROC-LOCK 3	ROC-LOCK 4	SNAP CLAW HP	SNAP CLAW SHORT	SNAP CLAW LP
PR25B		RL2	RL3		HP		
PR28B			RL3	RL4	HP		
PR30B		RL2	RL3	RL4	HP		LP
PR35B		RL2	RL3			LP	LP
PR40B			RL3			LP	LP



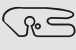
WiperFinder

Our WiperFinder, available by scanning the QR code, can also be used for the **REAR wiper range**.





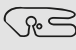
NEW

REAR WIPERS – Main blade applications

  			
FR25B			
FORD			
ECOSPORT 1.0 EcoBoost	01/18 → 12/22		B
FIESTA VII (HJ, HF) 1.0 EcoBoost	05/17 →		B
PUMA (J2K, CF7) 1.0 EcoBoost mHEV	09/19 →		B
MERCEDES-BENZ			
A-CLASS (W176) A 180 CDI / d (176.012)	06/12 → 05/18		B+E
RENAULT			
CLIO IV (BH_) 0.9 TCe 90 (BHNF, BHMA, BHMH, BHJK, BHJR)	11/12 → 08/21		B
CLIO IV (BH_) 1.2 16V	11/12 → 08/21		B
CLIO IV (BH_) 1.5 dCi 75 (BHN3)	11/12 → 08/21		B
CLIO IV (BH_) 1.5 dCi 90	11/12 → 08/21		B
VOLKSWAGEN			
UP! (121, 122, BL1, BL2, BL3, 123) 1.0	08/11 → 08/20		B+D
	08/11 → 11/19		B+D

FR28B			
FORD			
FOCUS IV (HN) 1.0 EcoBoost	01/18 →		B
VOLKSWAGEN			
GOLF VI (5K1) 1.6 TDI	02/09 → 11/12		B+D
GOLF VII (5G1, BQ1, BE1, BE2) 1.6 TDI	08/12 → 03/17		B+D
PASSAT B8 Variant (3G5, CB5) 2.0 TDI	11/14 → 12/23		B+D
POLO V (6R1, 6C1) 1.2	06/09 → 05/14		B+D
POLO V (6R1, 6C1) 1.2 TSI 16V	02/14 → 10/17		B+D
POLO V (6R1, 6C1) 1.4 (6R1)	03/09 → 05/14		B+D
POLO V (6R1, 6C1) 1.6 TDI	06/09 → 05/14		B+D
POLO VI (AW1, BZ1, AE1) 1.0 TSI	06/17 →		B+D

FR33B			
SEAT			
IBIZA V (KJ1, KJG) 1.0 TSI	01/17 →		B+D
SKODA			
FABIA II (542) 1.2	01/07 → 08/13		B+C
	09/13 → 12/14		B+D
VOLKSWAGEN			
GOLF V (1K1) 1.6	01/04 → 11/08		B+C
GOLF V (1K1) 1.9 TDI	10/03 → 11/08		B+C
POLO IV (9N_, 9A_) 1.2 12V	10/01 → 07/07		B+C
POLO IV (9N_, 9A_) 1.4 16V	10/01 → 05/08		B+C
	05/06 → 11/09		B+C
TIGUAN (5N_) 2.0 TDI 4motion	09/07 → 07/18		B+C
TOURAN (1T3) 1.6 TDI	05/10 → 05/15		B+D

  			
FR35B			
FIAT			
DOBLO Cargo (263_) 1.3 D Multijet	02/10 → 12/23		B+E
DOBLO Cargo (263_) 1.6 D Multijet (263WXD1B, 263WXR1B, 263WXX1B, 263ZXD1B, ...)	02/10 →		B+E
SKODA			
FABIA III (NJ3) 1.0 TSI	08/14 → 06/21		B+D
KAROQ (NU7, ND7) 1.5 TSI	07/17 →		B+D
OCTAVIA III Combi (5E5, 5E6) 2.0 TDI	11/12 → 10/20		B+D
VOLKSWAGEN			
TIGUAN (AD1, AX1) 1.5 TSI	11/18 → 04/24		B+D
TIGUAN (AD1, AX1) 2.0 TDI	01/16 → 04/24		B+D
TIGUAN ALLSPACE (BW2, BJ2) 2.0 TDI	06/17 → 12/23		B+D
T-ROC (A11, D11) 1.0 TSI	07/17 → 12/22		B+D
T-ROC (A11, D11) 1.5 TSI	11/17 → 12/22		B+D

FR40B			
AUDI			
A4 B8 Avant (8K5) 2.0 TDI	04/08 → 12/15		A
Q3 (8UB, 8UG) 1.4 TSI	10/13 → 10/18		A
Q3 (8UB, 8UG) 2.0 TDI quattro	06/11 → 10/18		A
SKODA			
OCTAVIA II (1Z3) 1.6	06/04 → 12/12		B+C
SUPERB III Estate (3V5) 2.0 TDI	03/15 → 12/23		B+D
VOLKSWAGEN			
MULTIVAN T6 (SGF, SGM, SGN, SHM, SHN) 2.0 TDI	04/15 → 08/24		B+D
TOURAN (1T1, 1T2) 1.9 TDI	08/03 → 05/10		B+C
TOURAN (1T1, 1T2) 2.0 TDI 16V	08/03 → 05/10		B+C
TRANSPORTER T6 / CARAVELLE T6 Bus (SGB, SGJ, SHB, SHJ) 2.0 TDI	04/15 → 08/24		B+D
TRANSPORTER T6 Van (SGA, SGH, SHA, SHH) 2.0 TDI	04/15 → 08/24		B+D

PR25B			
JEEP			
RENEGADE SUV (BU, B1, BV) 1.6 CRD	07/14 →		HP
MINI			
MINI (F55) Cooper	07/14 → 12/23		HP
MINI (F56) Cooper	12/13 → 12/23		HP
MITSUBISHI			
ASX (GA_W_) 1.6 MIVEC (GA1W)	06/10 → 12/22		RL2
RENAULT			
MODUS / GRAND MODUS (F/JPO_) 1.2 (JP0C, JP0K, FP0C, FP0K, FP0P, JP0P, JP0T)	12/04 → 04/05		HP



PR25B			
SUZUKI			
SWIFT III (MZ, EZ) 1.3 (RS413, ZC11S)	02/05 → 09/10	RL2	
SWIFT IV (FZ, NZ) 1.2 (AZH412, ZC72S)	10/10 → 12/16	RL2	
TOYOTA			
AURIS Estate (_E18_) 1.8 Hybrid (ZWE186_, ZWE186R, ZWE186H)	07/13 → 12/18	RL3	
AYGO X (_B7_) 1.0 VVT-i (KGB70)	03/22 →	RL3	
YARIS (_P21_, _PA1_, _PH1_) 1.5 Hybrid (MXPH10, MXPH11)	02/20 →	RL3	

PR28B

FIAT

500 (312_) 1.2 (312AXA1A)	07/07 →	HP	
PANDA (312_, 319_) 1.2 (312PXA1A)	02/12 →	HP	

FORD

KA (RU8) 1.2	10/08 → 05/16	HP	
--------------	---------------	----	--

HYUNDAI

i10 II (BA, IA) 1.0	01/14 → 12/19	RL4	
---------------------	---------------	-----	--

KIA

PICANTO III (JA) 1.0	03/17 →	RL4	
----------------------	---------	-----	--

PEUGEOT

2008 I (CU_) 1.2 THP 110 / PureTech 110	01/15 →	HP	
3008 II SUV (MC_, MR_, MJ_, M4_) 1.2 THP/ PureTech 130 (MRHNSM, MRHNSU, MRHNSJ, MRHNYW, ...)	05/16 →	LP	
3008 II SUV (MC_, MR_, MJ_, M4_) 1.5 BlueHDi 130	02/18 →	LP	

RENAULT

CAPTURI (J5_, H5_) 0.9 TCe 90	06/13 →	HP	
CAPTURI (J5_, H5_) 1.5 dCi 90 (J5N4, J5M5, J5MW, J5M6, J5AL, J5AJ)	06/13 →	HP	

PR30B

CITROËN

C1 (PM_, PN_) 1.0	06/05 → 09/14	LP	
-------------------	---------------	----	--

FORD

FIESTA VI (CB1, CCN) 1.25	06/08 → 04/17	LP	
---------------------------	---------------	----	--

NISSAN

QASHQAI II (J11, J11_) 1.2 DIG-T	11/13 → 12/20	HP	
QASHQAI II (J11, J11_) 1.5 dCi	11/13 → 12/20	HP	

OPEL

CORSA E (X15) 1.4 (08, 68)	09/14 →	LP	
----------------------------	---------	----	--

PEUGEOT

107 (PM_, PN_) 1.0	06/05 → 05/14	LP	
--------------------	---------------	----	--



PR30B			
RENAULT			
CLIO II (BB_, CB_) 1.2 16V (BB05, BB0W, BB11, BB27, BB2T, BB2U, BB2V, CB05, ...)	06/01 → 08/16	HP	
TOYOTA			
AYGO (_B1_) 1.0 (KGB10_, KGB10R)	07/05 → 05/14	LP	
AYGO (_B4_) 1.0 (KGB40)	05/14 →	RL3	
YARIS (_P13_) 1.5 Hybrid (NHP130_, NHP130)	03/12 → 06/20	RL3	

PR35B

CITROËN

C3 I (FC_, FN_) 1.4 HDi	02/02 → 12/09	LP	
C3 I (FC_, FN_) 1.4 i	02/02 → 12/09	LP	

FORD

FOCUS II (DA_, HCP, DP) 1.6	02/08 → 09/12	LP	
-----------------------------	---------------	----	--

PEUGEOT

206 Hatchback (2A/C) 1.4 i	09/98 → 12/12	LP	
206 Hatchback (2A/C) 1.4 HDi eco 70	09/01 → 04/09	LP	
208 I (CA_, CC_) 1.2 VTI 82	03/12 → 12/19	LP	
208 II (UB_, UP_, UW_, UJ_) 1.2 PureTech 100	06/19 →	LP	

RENAULT

CLIO III (BR0/1, CR0/1) 1.2 16V (BR02, BR0J, BR11, CR02, CR0J, CR11)	06/05 → 12/14	LP	
KANGOO Express (FW0/1_) 1.5 dCi 90 (FW0G, FW05, FW08, FW11)	06/09 →	LP	

TOYOTA

C-HR (_X1_) 1.8 Hybrid (ZYX10_, ZYX11_, ZYX10R, ZYX11R)	10/16 →	RL2	
---	---------	-----	--

PR40B

CITROËN

XSARA PICASSO (N68) 2.0 HDi	12/99 → 12/11	LP	
-----------------------------	---------------	----	--

DACIA

SANDERO II TCe 90 (B8M1, B8MA, B8AC)	10/12 →	LP	
SANDERO II 1.5 dCi	10/12 →	LP	
SANDERO III 1.0 TCe 90	01/21 →	LP	

NISSAN

MICRA III (K12) 1.2 16V	06/05 → 06/10	LP	
-------------------------	---------------	----	--

OPEL


CORSA C (X01) 1.2 (F08, F68)	09/00 → 12/09	LP	
CORSA C (X01) 1.2 Twinport (F08, F68)	07/04 → 12/09	LP	


PEUGEOT


207 (WA_, WC_) 1.4	04/06 → 10/13	LP	
207 (WA_, WC_) 1.4 HDi	02/06 → 12/15	LP	
207 (WA_, WC_) 1.6 HDi	02/06 → 10/13	LP	

CROSS REFERENCES


STANDARD


IAM		
BOSCH		
3 397 011 412	SW1380	
3 397 001 741	SW1400	
3 397 001 744	SW1450	
3 397 001 748	SW1500	
3 397 001 750	SW1530	
3 397 001 752	SW1550	
3 397 001 754	SW1600	
3 397 004 364	SW1500	
3 397 004 489	SW1710	
3 397 004 578	SW1330	
3 397 004 578	SW1350	
3 397 004 579	SW1400	
3 397 004 581	SW1450	
3 397 004 582	SW1480	
3 397 004 583	SW1500	
3 397 004 584	SW1530	
3 397 004 585	SW1550	
3 397 004 586	SW1600	
3 397 004 587	SW1660	
3 397 004 590	SW1500	
3 397 004 592	SW1600	
3 397 004 593	SW1660	
3 397 004 595	SW1280	
3 397 004 662	SW1530	
3 397 004 667	SW1400	
3 397 004 668	SW1450	
3 397 004 669	SW1480	
3 397 004 670	SW1500	

IAM		
BOSCH		
3 397 004 671	SW1530	
3 397 004 672	SW1550	
3 397 004 673	SW1600	
3 397 004 754	SW1350	
3 397 004 755	SW1350	
3 397 004 756	SW1380	
3 397 004 757	SW1400	
3 397 004 758	SW1430	
3 397 004 759	SW1480	
3 397 004 760	SW1500	
3 397 004 761	SW1530	
3 397 004 762	SW1550	
3 397 004 763	SW1450	
3 397 004 915	SW1480	
3 397 004 917	SW1530	
3 397 004 918	SW1550	
3 397 011 310	SW1660	
3 397 011 351	SW1580	
3 397 011 353	SW1380	
3 397 011 354	SW1430	
3 397 011 391	SW1350	
3 397 011 392	SW1400	
3 397 011 393	SW1450	
3 397 011 394	SW1480	
3 397 011 395	SW1500	
3 397 011 396	SW1530	
3 397 011 397	SW1550	
3 397 011 398	SW1580	

IAM		
BOSCH		
3 397 011 399	SW1600	
3 397 011 400	SW1660	
3 397 011 402	SW1660	
3 397 011 534	SW1580	
3 397 011 543	SW1710	
3 397 011 549	SW1710	
3 397 011 592	SW1400	
3 397 011 641	SW1660	
3 397 011 802	SW1280	
3 397 011 937	SW1660	
3 397 011 939	SW1710	
3 397 012 368	SW1600	
3 397 015 046	SW1430	
3 397 015 047	SW1450	
3 397 015 182	SW1660	
3 397 015 193	SW1300	
3 397 018 140	SW1400	
3 397 018 145	SW1450	
3 397 018 170	SW1710	
3 397 018 173	SW1710	
3 397 018 300	SW1600	
3 397 018 802	SW1280	
3 397 018 962	SW1550	
3 397 018 963	SW1660	
3 397 018 964	SW1500	
3 397 018 965	SW1550	
3 397 018 966	SW1600	

TOUCH FLAT

IAM		
BOSCH		
3 397 006 827	MF35B	
3 397 006 828	MF38B	
3 397 006 829	MF40B	
3 397 006 830	MF43B	
3 397 006 831	MF45B	
3 397 006 832	MF48B	
3 397 006 833	MF50B	
3 397 006 834	MF53B	
3 397 006 835	MF55B	
3 397 006 836	MF58B	
3 397 006 837	MF60B	
3 397 006 838	MF65B	
3 397 006 839	MF70B	
3 397 006 840	MF75B	
3 397 006 841	MF80B	

IAM		
VALEO		
575005	MF50B	
575000	MF35B	
575001	MF38B	
575002	MF40B	
575003	MF45B	
575004	MF48B	
575006	MF53B	
575007	MF55B	
575008	MF60B	
575009	MF65B	
575010	MF70B	
575011	MF75B	

CROSS REFERENCES

TWIN FLAT

IAM	MAGNETI MARELLI PARTS & SERVICES
BOSCH	
3 397 007 299	TW6035C
3 397 007 047	TW6045F
3 397 007 088	TW6550C
3 397 007 099	TW6565B
3 397 007 100	TW7065BO
3 397 007 115	TW6045E
3 397 007 116	TW6040C
3 397 007 116	TW6040E
3 397 007 187	TW6045C
3 397 007 225	TW6555C
3 397 007 256	TW7055BO
3 397 007 290	TW5550B
3 397 007 292	TW6038C
3 397 007 297	TW6050D
3 397 007 309	TW6548C
3 397 007 414	TW6540C
3 397 007 422	TW6540E
3 397 007 424	TW5853E
3 397 007 426	TW6548E
3 397 007 430	TW6053C
3 397 007 432	TW6538C
3 397 007 466	TW6538B
3 397 007 466	TW6540B
3 397 007 501	TW8070CO
3 397 007 502	TW7565EO
3 397 007 540	TW6565CO
3 397 007 540	TW6863CO
3 397 007 566	TW6545K
3 397 007 570	TW6535K
3 397 007 579	TW6040A
3 397 007 581	TW6858CO
3 397 007 583	TW6535C
3 397 007 620	TW6048D
3 397 007 640	TW7373CO
3 397 007 644	TW7565BO
3 397 007 696	TW5545B
3 397 007 863	TW6545D
3 397 007 868	TW6535E
3 397 009 081	TW5050K
3 397 009 821	TW6060D
3 397 013 532	TW6500B
3 397 014 009	TW7570CO
3 397 014 010	TW6048B
3 397 014 010	TW6045B
3 397 014 076	TW4548K
3 397 014 077	TW7550C
3 397 014 115	TW6548D
3 397 014 156	TW6540G
3 397 014 208	TW7043C
3 397 014 214	TW7575BO
3 397 014 245	TW7040G

IAM	MAGNETI MARELLI PARTS & SERVICES
BOSCH	
3 397 014 271	TW6050K
3 397 118 902	TW5348K
3 397 118 907	TW6040K
3 397 118 908	TW6045K
3 397 118 911	TW6540K
3 397 118 922	TW5050B
3 397 118 929	TW6050B
3 397 118 931	TW5545A
3 397 118 936	TW6048A
3 397 118 938	TW6060A
3 397 118 948	TW6565A
3 397 118 951	TW6548A
3 397 118 965	TW7060CO
3 397 118 967	TW6560B
3 397 118 974	TW5348C
3 397 118 977	TW6543A
3 397 118 979	TW6048C
3 397 118 984	TW5540K
3 397 118 996	TW6053K
VALEO	
574394	TW6035C
274382	TW5348C
574311	TW6565A
574314	TW6548A
574316	TW6560B
574324	TW6543A
574329	TW7055BO
574342	TW5050B
574346	TW6048A
574351	TW6060A
574355	TW7065BO
574358	TW6565B
574363	TW6040C
574363	TW6040E
574365	TW6045E
574375	TW6540B
574377	TW6550C
574385	TW6048C
574387	TW5550B
574389	TW6050B
574392	TW6555C
574462	TW6050D
574468	TW5545A
574472	TW6040A
574476	TW6048D
574634	TW5853E
574641	TW6045C
574651	TW6548C
574653	TW6540E
574663	TW6535C

IAM	MAGNETI MARELLI PARTS & SERVICES
VALEO	
574666	TW6538C
574673	TW6565CO
574674	TW6858CO
574678	TW7565EO
574688	TW8070CO
574694	TW7373CO
574703	TW6535E
574707	TW6545D
574741	TW5545B
574745	TW6038C
574747	TW6540C
577702	TW6540D
577704	TW6035N
577720	TW5555F
577724	TW6055F
577728	TW7045F
577768	TW6560F
577802	TW6543J
577804	TW6040D
577814	TW6053C
577818	TW6548D
577826	TW6048B

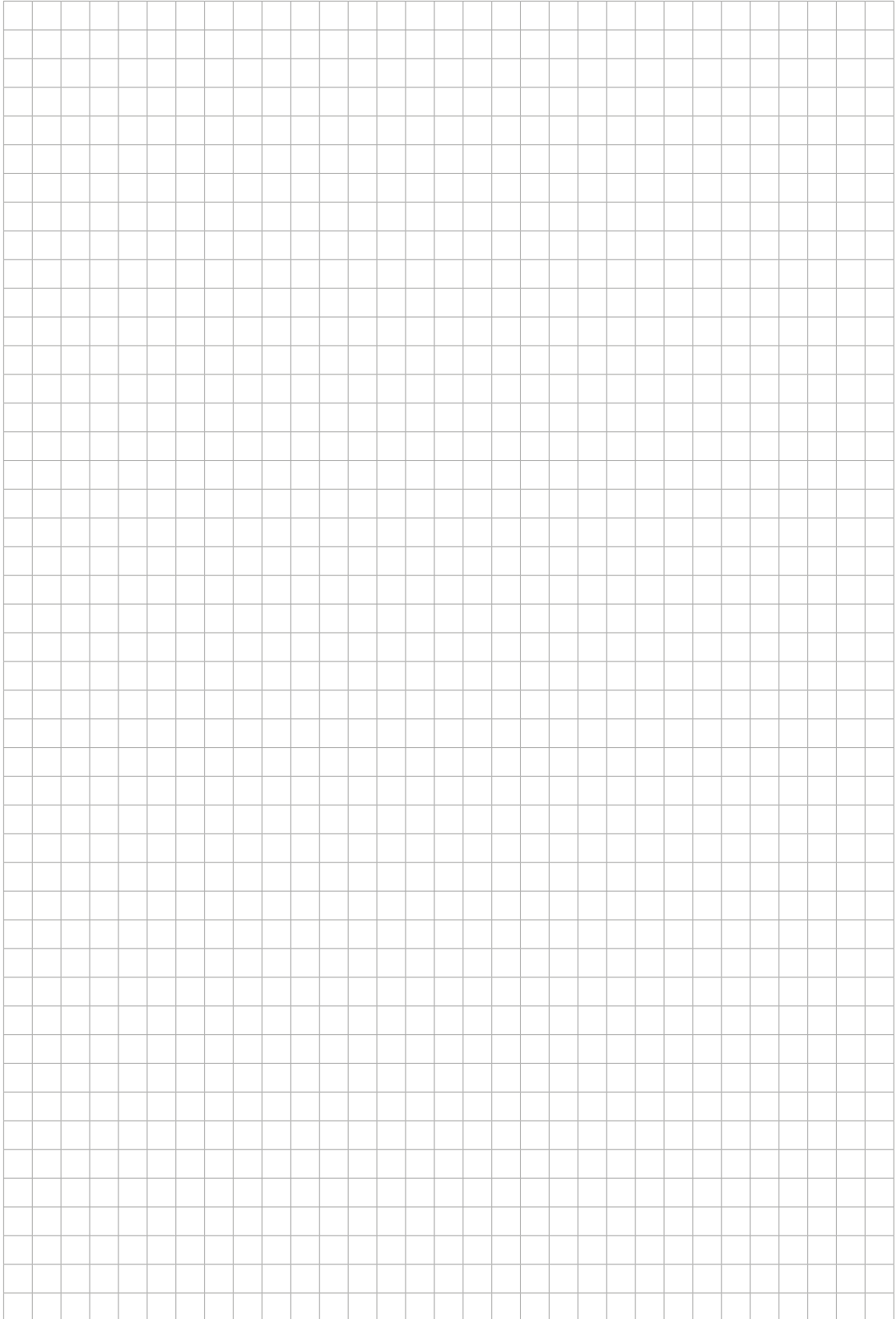
CROSS REFERENCES

REAR WIPERS

IAM		MAGNETI MARELLI PARTS & SERVICES	
BOSCH			
3 397 008 056		FR25B	
3 397 004 559		PR35B	
3 397 004 628		PR30B	
3 397 004 629		PR30B	
3 397 004 631		PR35B	
3 397 004 632		PR40B	
3 397 004 801		PR25B	
3 397 004 802		PR28B	
3 397 004 990		PR30B	
3 397 008 004		FR33B	
3 397 008 005		FR28B	
3 397 008 006		FR33B	
3 397 008 009		FR40B	
3 397 008 045		FR28B	
3 397 008 047		FR40B	
3 397 008 050		FR40B	
3 397 008 057		FR40B	
3 397 008 058		FR25B	
3 397 008 192		FR35B	
3 397 008 634		FR28B	
3 397 008 635		FR35B	
3 397 008 713		FR33B	
3 397 008 995		FR33B	
3 397 008 996		FR35B	
3 397 008 997		FR40B	
3 397 008 998		FR40B	
3 397 011 134		PR40B	
3 397 011 306		PR30B	
3 397 011 428		PR28B	
3 397 011 430		PR35B	
3 397 011 432		PR30B	
3 397 011 433		PR35B	
3 397 011 629		PR25B	
3 397 011 677		PR25B	
3 397 011 9653		PR25B	

IAM		MAGNETI MARELLI PARTS & SERVICES	
VALEO			
574086		PR25B	
574093		PR25B	
574126		PR30B	
574128		PR40B	
574151		PR30B	
574164		PR35B	
574197		PR35B	
574199		PR30B	
574201		PR35B	
574202		PR30B	
574207		PR35B	
574224		PR25B	
574247		PR28B	
574281		PR25B	
574289		PR40B	
574298		FR28B	
574299		FR28B	
574300		FR33B	
574331		FR40B	
574332		FR28B	
574336		FR35B	
574337		FR40B	
574580		FR33B	
574582		FR40B	
574587		PR28B	
574592		FR35B	
574599		FR40B	
574609		FR25B	
574610		FR25B	
574611		FR35B	
574612		FR33B	
574613		FR40B	
574615		FR40B	

NOTES



With more than 30 product lines, Magneti Marelli Parts & Services supplies complete and reliable solutions to satisfy all requirements for automotive maintenance and repair, guaranteeing superior performance and customer satisfaction.



Scan the QR Code for further information



magnetimarelli-parts-and-services.com



099990332571 – © Magneti Marelli Parts & Services 2026 – 8 435034 959413